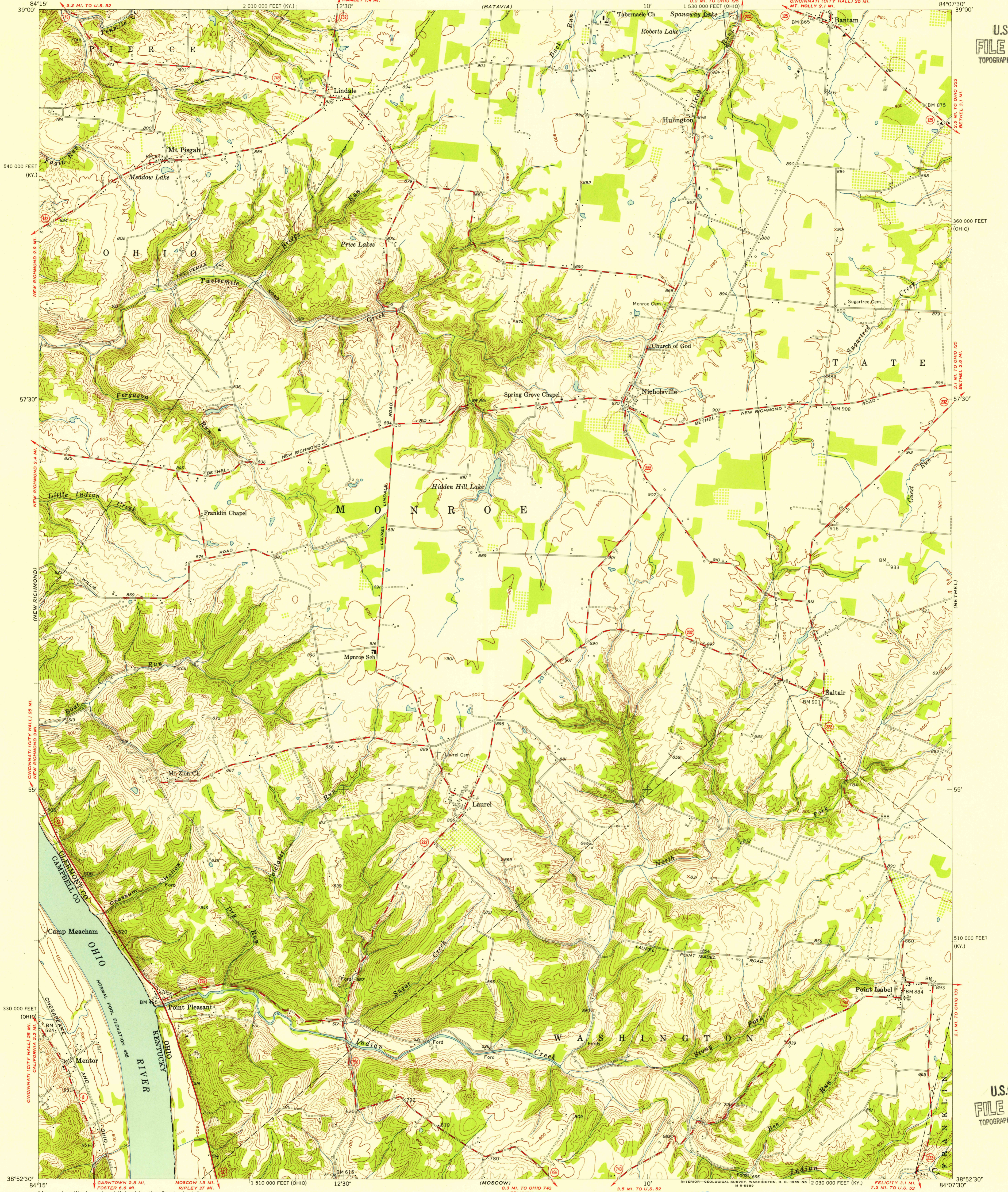
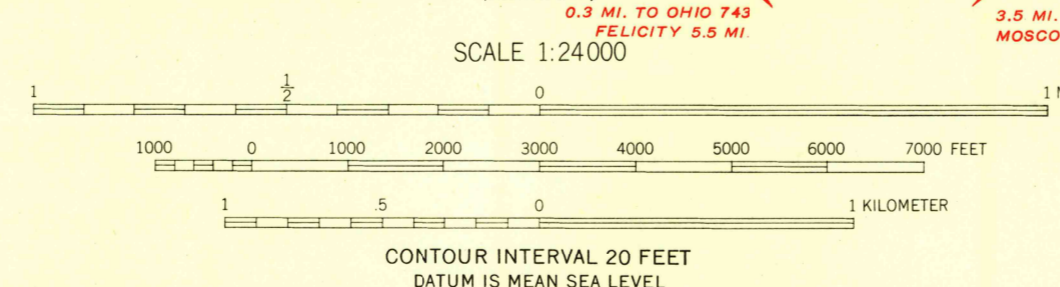


U.S.G.S.
FILE COPY
TOPOGRAPHIC DIVISION



Mapped, edited, and published by the Geological Survey
Control by USGS and USC&GS
Topography from aerial photographs by photogrammetric methods
Aerial photographs taken 1952. Field check 1953
Polyconic projection. 1927 North American datum
10,000-foot grids based on Ohio coordinate system,
south zone, and Kentucky coordinate system, north zone



USGS
Historical File
Topographic Division

ROAD CLASSIFICATION

Heavy-duty	4 LANE 6 LANE	Light-duty
Medium-duty	4 LANE 6 LANE	Unimproved dirt

U. S. Route State Route



LAUREL, OHIO-KY.
NW/4 FELICITY 15' QUADRANGLE
N3852.5-W8407.5/7.5

U.S.G.S.
FILE COPY
TOPOGRAPHIC DIVISION