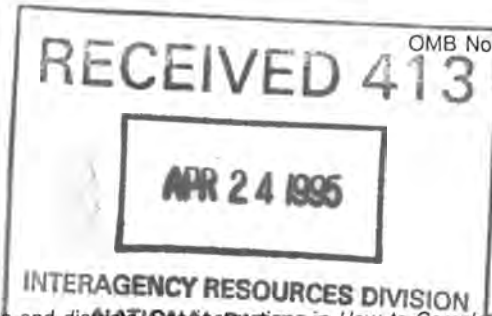


United States Department of the Interior  
National Park Service

### National Register of Historic Places Registration Form



This form is for use in nominating or requesting determinations for individual properties and districts. *Complete each item by marking "x" in the appropriate box or by entering the information requested. If an item does not apply to the property being documented, enter "N/A" for "not applicable."* For functions, architectural classification, materials, and areas of significance, enter only categories and subcategories from the instructions. Place additional entries and narrative items on continuation sheets (NPS Form 10-900a). Use a typewriter, word processor, or computer, to complete all items.

#### 1. Name of Property

historic name York Street Historic District  
other names/site number n/a

#### 2. Location

street & number York and West Eighth Streets  not for publication  
city or town Newport  vicinity  
state Kentucky code KY county Campbell code 037 zip code 41071

#### 3. State/Federal Agency Certification

As the designated authority under the National Historic Preservation Act, as amended, I hereby certify that this  nomination  request for determination of eligibility meets the documentation standards for registering properties in the National Register of Historic Places and meets the procedural and professional requirements set forth in 36 CFR Part 60. In my opinion, the property  meets  does not meet the National Register criteria. I recommend that this property be considered significant  nationally  statewide  locally. ( See continuation sheet for additional comments.)  
David L. Morgan, Executive  
Director/SHPO 3-29-95  
Signature of certifying official/Title Date  
Kentucky Heritage Council/State Historic Preservation Office  
State of Federal agency and bureau

In my opinion, the property  meets  does not meet the National Register criteria. ( See continuation sheet for additional comments.)  
Signature of certifying official/Title Date  
State or Federal agency and bureau

#### 4. National Park Service Certification

- I hereby certify that the property is:
- entered in the National Register.  
 See continuation sheet.
  - determined eligible for the National Register  
 See continuation sheet.
  - determined not eligible for the National Register.
  - removed from the National Register.
  - other, (explain): \_\_\_\_\_

for  
Signature of the Keeper Edson F. Beall Date of Action 5.26.95  
Chief of the National Register

5. Classification

Ownership of Property  
(Check as many boxes as apply)

- private
- public-local
- public-State
- public-Federal

Category of Property  
(Check only one box)

- building(s)
- district
- site
- structure
- object

Number of Resources within Property  
(Do not include previously listed resources in the count.)

Contributing	Noncontributing	
56	8	buildings
	8	sites
		structures
		objects
56	16	Total

Name of related multiple property listing  
(Enter "N/A" if property is not part of a multiple property listing.)  
n/a

Number of contributing resources previously listed  
in the National Register

2

6. Function or Use

Historic Functions

(Enter categories from instructions)

- domestic - single dwelling
- domestic - multiple dwelling
- education - school
- social - meeting hall
- commerce/trade - business
- religion - religious facility
- religion - church school

Current Functions

(Enter categories from instructions)

- domestic - single dwelling
- domestic - multiple dwelling
- funerary - mortuary
- recreation/culture - theater
- commerce/trade - business
- religion - religious facility
- religion - church school
- vacant work in progress

7. Description

Architectural Classification

(Enter categories from instructions)

- mid-19th c. - Greek Revival
- late Victorian - Italianate
- late Victorian - Second Empire
- late Victorian - Queen Anne
- late 19th c. revivals - Gothic Revival
- 20th c. revivals - Classical Revival
- 20th c. American - Bungalow/Craftsman

Materials

(Enter categories from instructions)

- foundation limestone, concrete
- walls brick, weatherboard
- roof shingle, tin, slate
- other

Narrative Description

(Describe the historic and current condition of the property on one or more continuation sheets.)

United States Department of the Interior  
National Park Service

## National Register of Historic Places Continuation Sheet

RECEIVED 413

APR 24 1995

INTERAGENCY RESOURCES DIVISION

Section number 7 Page 1

York Street Historic District  
Campbell County, KY

### 7. Description

The York Street Historic District is located in Newport, Kentucky, a city of 18,876 (1990 census) on the south bank of the Ohio River opposite Cincinnati. The York Street Historic District begins in the 600 block of York Street in the Mayo's Orchard Addition and proceeds south along York Street through the Buena Vista Addition to the intersection of York and Tenth Streets. Many of Newport's wealthiest citizens and government leaders once lived in the three-block area; these fashionable citizens created distinctive, often ornate homes, many of which remain today. The district, which occupies seven acres, contains 64 buildings, 56 of which are contributing; eight noncontributing vacant lots are also included. Residential, commercial, institutional and religious buildings are included in the district. Most buildings have been well preserved and maintained, and several are undergoing renovation.

Newport is one of a series of contiguous northern Kentucky river towns with large inventories of historic 19th and early 20th century buildings, many of which have already been honored with National Register listing individually or as part of districts. On the east side of Newport, the Mansion Hill Historic District, comprising about 600 buildings, was listed in 1980; it was followed in 1982 by the adjacent East Row district, including about 900 residential and commercial buildings. Numerous individual buildings have also been honored, including the General James Taylor Mansion, St. Paul's Episcopal Church and the Posey Flats. The Salem Methodist Church and parsonage, located in the York Street district, were listed in 1986.

The York Street district is located in the center of Newport, just west of the Monmouth Street central business corridor. York Street forms the eastern boundary of the West End, a residential, commercial and industrial neighborhood developed for the most part in the second and third quarters of the 19th century (see inventory map). Because of their proximity to the central business district, by the late 19th century the 700 and 800 blocks of York Street had developed a mixed-use character, blending residential, commercial and religious uses. As years passed, an ongoing process of redevelopment shaped and reshaped these blocks: residences were converted to business or institutional use, commercial or religious buildings replaced rows of houses, and buildings were removed to create parking lots. The 900 block, on the other hand, remained residential in character and has seen little change over time.

The streetscape of the 900 block of York Street is typical of the 19th-century

United States Department of the Interior  
National Park ServiceNational Register of Historic Places  
Continuation SheetSection number 7 Page 2York Street Historic District  
Campbell Co., KY

neighborhoods of Newport and, indeed, of all the 19th-century river towns of northern Kentucky: it is characterized by a grid of narrow streets with no dividing alleys. Lots are minimal in size, averaging 30 feet wide by 100 feet deep (see Sanborn map). To conserve space and enhance privacy, houses were built on lot lines with windows limited to the side facing one's own yard. Some residences were built close to the front lot lines, with little or no setback. The 800 block and west side of the 700 block, on the other hand, exhibit a number of large, stately homes on spacious lots, often measuring 60 by 100 feet. Some of these houses have generous setbacks of up to twenty feet --an arrangement unique in densely-populated Newport.

Throughout the district, consistency of style, scale and materials provides visual continuity. Most buildings in the district are built of brick laid in a common bond pattern on a foundation of cut or rock-faced stone. Many raised-seam-metal roofs remain, and several buildings retain decorative slate roofs. Pressed-metal or wooden cornices with brackets ornament most residences, along with decorative hoodmolds in a variety of styles: rectangular, semi-circular, segmentally arched with keystones, and pedimented. Most houses in the district were built without porches, but the simple, classically-inspired porticoes added to several homes in the early 20th century, including 812 and 814 York, have since achieved significance in their own right. Throughout the district the repetition of design elements such as brackets, dentils, arches, pediments and architraves, creates a harmonious rhythm. Landscape elements like iron fences, stone walls and pillars enrich the streetscape and enhance the district's intimate scale.

The district contains examples of the most common house types found in the city. These include townhouses and side-passage dwellings; late Victorian-era dwellings of picturesque, rambling plan; rectangular shotgun houses and boxlike bungalows. One of the most common house types in the district is the side-passage house; many of the earliest examples are Greek Revival in style, with vernacular squared Doric columns accentuating the recessed front entrance. A good example of this type can be found at 825 York Street. Other side passage homes, such as 911 York Street, exemplify the Italianate style, with ornate entry frontispieces and tall, narrow windows capped by projecting hoodmolds. Still other Italianate dwellings of the district are adorned with elaborate cornices, incised stonework, beveled quoins' or angled bays projecting from side elevations.

Perhaps the most distinctive house type of the district is the so-called Covington-Newport plan townhouse. The Covington-Newport house, named for the two cities in

United States Department of the Interior  
National Park ServiceNational Register of Historic Places  
Continuation SheetSection number 7 Page 3 York Street Historic District  
Campbell Co., KY

which it predominates, is a 19th-century house type popular from the late 1860s through the early 1890s; ideally suited to narrow lots, it resembles a detached rowhouse. Covington-Newport houses stand two or two and a half stories high with narrow, two-bay facades; the main entrance located in the side elevation, often in the second bay location. The interior floorplan consists of a parlor in the front, followed by an entry stair hall, and one or two rooms behind the stair hall. Examples of this house type are found in the 900 block of York Street, including the homes at 913 and 938 York Street. Like most examples of the Covington-Newport houses, both 913 and 938 York incorporate traits of the Italianate style. Much more information on these houses is found in Walsh (1993).

Although a common sight on the side streets and alleys of Newport, shotgun homes, created for the working class, are rarely seen on the main thoroughfares of the city. Two examples are located in the district at 921 and 930 York Street.

Like the other 19th-century neighborhoods of Newport, the York Street Historic District contains commercial and religious buildings along with the residential structures. Commercial buildings, two or three stories tall with first-floor storefronts and upper-story living units, typically occupy corner lots; in the district, such commercial-residential buildings are located at the corners of Eighth, Ninth and Tenth Streets. Typical of these is the building at 737 York Street, adjoining Eighth Street. It stands two and a half stories tall under a shed roof with false mansard front and retains its original iron-and-glass storefront.

A trio of late 19th century churches anchor the corner of Eighth and York Streets. The First Baptist Church and the Salem United Methodist Church both feature towers of varying heights, arched Gothic windows, and elaborate stained glass, while the gabled facade of the York Street Congregational Church displays a blind arch with basketweave brick pattern. Religious architecture in Newport, however, was not limited to the Gothic style. Classical Revival detailing ornaments the First Baptist Church Bible School, and sleek Art Moderne curves accentuate the First Church of the Nazarene.

Sanborn maps of Newport, prepared in 1886, 1894 and 1910, record the historic appearance of York Street. By 1886 the street was solidly lined with substantial single and double dwellings, and empty lots were few. Commercial buildings anchored the corners, and occasionally interrupted rows of residences; a trio of small business also occupied the southwest corner of Seventh and York. Many houses on the 700 and 800 blocks included carriage houses—an uncommon luxury in Newport—at the rear of the property. The maps also illustrate the subtle changes that took place over the next few decades. By 1894 the Feth Building had been constructed at the northwest corner of Eighth Street; a small upholstery/mattress factory at 913 York

United States Department of the Interior  
National Park ServiceNational Register of Historic Places  
Continuation SheetSection number 7 Page 4 York Street Historic District  
Campbell Co., KY

had been replaced by a residence, and a drugstore occupied a formerly empty lot at the northwest corner of Tenth Street. By 1910 a new commercial building replaced a tiny shop at 737 York; the Hawkins House had been converted to a lodge hall, and a new drugstore had replaced a residence at the northeast corner of Tenth Street. A building on the east side of the 700 block was also being used as a warehouse for the Donaldson Lithographing Company. During the next four decades, more substantive changes would take place: a row of houses would be removed for the First Baptist Church Bible School, several additional houses would be demolished to make way for the Radel Funeral Home and First Church of the Nazarene, and others would be destroyed for the National Band and Tag Company.

As a result of the architectural contributions of many structures, the three-block area reflects religious, commercial and private life in Newport over the period 1848-1939.

## INVENTORY OF THE YORK STREET HISTORIC DISTRICT

1. 702 York Street - Contributing but altered. Currently Gleason's Electric, Inc. An early 20th century commercial structure, concrete block and brick construction, flat roof, greatly altered storefront.
2. 706 York Street - NONCONTRIBUTING BUILDING. Currently Abner's Tri-State Radiator, Inc. A late nineteenth century or early twentieth century commercial structure, stone and brick construction, greatly altered front facade

Noncontributing open space.

3. York Street Congregational Church. Small-scale nave-plan church of the 1880s; design combines Gothic Revival and Romanesque Revival elements. Ornate brickwork, round-arched art glass windows. Spacious lot with deep setback; stone pillars and wrought-iron fence define property line.

Noncontributing open space created by demolition of York Street Congregational Church parsonage.

4. 724-26 York Street - Second Empire duplex of large scale, built 1870s. Slate-clad mansard roof with arched dormers crowned by acroteria. Recessed entrances, angled facade bays. Limestone pillars accent front lot line. During the late 19th century housed the Kentucky College of Music and Art.

Noncontributing open space: parking lot for Feth Building, created by demolition of

United States Department of the Interior  
National Park ServiceNational Register of Historic Places  
Continuation SheetSection number 7 Page 5 York Street Historic District  
Campbell Co., KY

historic house.

5. 734 York Street - Side-passage Italianate residence built c. 1865, with Egyptian Revival detailing unique in Newport. Elaborate stone entry frontispiece; floor-to-ceiling arched windows with stone hoods and lotus-like colonettes; inset galleries along south elevation. Greek Revival interior finish.

6. 738 York Street - Feth Building, built late 1880s. Mixed-use commercial building with ground-floor storefront and upper-story meeting rooms. Stylish, exuberant, eclectic design combines Victorian Gothic, Romanesque Revival and Neo-Grec elements. Three stories high with slate mansard roof. Richly ornamented facade includes patterned brick and stonework, iron balconettes, iron storefront. Chamfered storefront entrance addresses the corner; separate doorway facing York Street provides access to upper floors. Renovation in progress.

7. 19 West Eighth Street - One-and-a-half story brick bungalow, c. 1920-1930. Inset porch, glazed front door framed by sidelights. Currently abandoned and in poor condition.

8. 21 West Eighth Street - Brick bungalow similar to 19 West Eighth Street. New stained glass windows of traditional design installed. Renovation in progress.

9. 16 West Eighth Street - Newport-Covington Plan house in Italianate style, c. 1875. Segmentally-arched windows with stone hoodmolds; angled bay on east elevation. Full-width porch added in the early 20th century includes Corinthian posts, and pedestals and balustrade of two-tone brick. Renovation in progress.

10. 18 West Eighth Street - Two-and-a-half story townhouse in the Queen Anne style, built near the front lot line. Dominant feature of the facade is an angled oriole projecting from the second story. Corbeled brick belt courses add horizontal emphasis.

11. 802 York Street - Salem Methodist Church, built 1882. High-style Victorian Gothic church designed by Samuel Hannaford, Cincinnati's premier architect of the late Victorian era. Steeple atop corner tower--once the city's tallest spire--removed after storm damage. Currently houses the Stained Glass Theater community playhouse. National Register, 1986.

12. 810 York Street - Newport-Covington Plan house of the early 1880s, with late Italianate detailing including coved metal cornice and iron balconette beneath second-story focal window. Brick entry porch added to side elevation in the 1920s.

United States Department of the Interior  
National Park ServiceNational Register of Historic Places  
Continuation SheetSection number 7 Page 6 York Street Historic District  
Campbell Co., KY'

Originally parsonage for Salem Methodist Church. National Register, 1986. Renovation in progress.

13. 812 York Street - Greek Revival townhouse on the Newport-Covington plan with a front door, built c. 1855-1860. Stepped parapet gables, stone lintels. Tuscan porch added c. 1900. Includes a rare surviving cast-iron "Wickersham" fence of the mid-19th century.

14. 814 York Street - Greek Revival brick dwelling, c. 1855-1860, similar to 812. Floor-to-ceiling parlor window; upper-story windows contain 6/1 sash. Minimal cornice brackets. Tuscan porch added c. 1900. Cast-iron "Wickersham" fence.

15. 816 York Street - Classical Revival townhouse, built c. 1900. Fired brick facade with angled bay, trimmed with smooth-surface stone and molded brick. Leaded glass door panel. Elaborate bow-front Corinthian portico. Cast-iron "Wickersham" fence. Restoration in progress.

Noncontributing open space: parking lot for Radel Funeral Home.

16. 822 York Street - Currently the Radel Funeral Home. Large-scale Georgian Revival building with Arts and Crafts influence: wire-cut chocolate-brown brick with keystoned jack arches; Doric entry surround; Craftsman sash; low hipped roof with gablet; poured concrete foundation. Replacement windows installed in facade bays. Approximate date c. 1910-1920; replaced a group of smaller residences depicted on 1886-1910 Sanborn maps.

17. 830 York Street - First Church of the Nazarene, built 1939. Art Moderne church of streamlined facade of buff brick with distinctive rounded corners. Some stained glass windows replaced and metal canopy over front walkway added, added 1950s.

18. NONCONTRIBUTING BUILDING: Nazarene church annex, built 1950s.

Noncontributing open space: parking lot for Home Plate Card Company.

19. 844 York Street - NONCONTRIBUTING BUILDING: late 19th century commercial/residential building, currently the Home Plate Card Company. Insulbrick siding, storefront greatly altered, numerous additions at rear.

20. 846 York Street - NONCONTRIBUTING BUILDING: commercial/residential building of third quarter of 19th century; currently the Green Derby Restaurant. Formstone wall facing, several twentieth century additions.



United States Department of the Interior  
National Park ServiceNational Register of Historic Places  
Continuation SheetSection number 7 Page 7York Street Historic District  
Campbell Co., KY

- Noncontributing open space: Green Derby parking lot at southwest corner Ninth and York Streets.
21. 908 York Street - Newport-Covington Plan house of compact form with a front door. Transitional Greek Revival/Italianate styling.
22. 914 York Street - Contributing but altered. Side-passage Greek Revival dwelling featuring denticulated cornice with mutule blocks.
23. 916 York Street - Side-passage Greek Revival residence of simple design; standing seam metal roof. Built at front lot line.
24. 918 York Street - Side-passage Greek Revival residence with standing seam metal roof, paired cornice brackets, pedimented and bracketed window hoods.
25. 920 York Street - Newport-Covington Plan house of modest scale; minimal Greek Revival detailing.
26. 924 York Street - Side-passage Italianate dwelling with three-bay facade. Floor-to-ceiling arched windows (arches filled in with metal panels). Elliptical frieze windows.
27. 926 York Street - NONCONTRIBUTING BUILDING: side passage residence, approximate date 1850-1874; formstone wall facing, all trim removed, frame additions with vinyl siding, greatly altered windows.
28. 928 York Street - Side-passage Greek Revival residence. Leaded glass door panel. Vinyl soffits added.
29. 930 York Street - Frame shotgun house of the late 19th century, with forward-facing gable; exterior clad in wood shingles. Two-story rear addition. Deep setback from street.
30. 936 York Street - Side-passage Italianate house with arched hoodmolds and entrance; geometric beveled glass panel in front doorway. Dormer added to roof in the early 20th century; brick Mission-style porch added c. 1920.
31. 938 York Street - Newport-Covington plan Italianate house, built early 1880s. Geometric hoodmolds, beveled quoins, stone belt courses with incised motifs, angled bay on side.

United States Department of the Interior  
National Park ServiceNational Register of Historic Places  
Continuation SheetYork Street Historic District  
Campbell Co., KYSection number 7 Page 8

32. 942 York Street - Side-passage Greek Revival residence with denticulated cornice and stone lintels; shallow one-bay addition on south side. Neo-Classical front porch with two-tone brick balustrade, added early 20th century.
33. 944-946 York Street - Duplex version of Newport-Covington Plan house with a front door; each unit two bays wide. Pedimented and flat-arched window hoods. Cornice features mutule blocks and paired brackets.
34. 948 York Street - Corner shop/residence of late Italianate period, built c. 1890. Heavy cornice with paired brackets and corner finials; arcaded brick corbel table; triple bay in second story with continuous stone lintel; iron storefront with minor alterations.
35. 649 York Street - Newport Masonic Temple, designed by local architect Samuel Peacock and featured in Scientific American, Architects and Builders Edition, January 1888. Large-scale three-story mixed-use building of eclectic design and monumental character, with corner turret balanced by a square tower. Facade culminates in pediment bearing overscaled Masonic insignia. Originally housed ground-floor storefront and upper-story meeting rooms and offices; currently used as secondhand store. Some windows replaced with undersized sash. Storefront repainted in decorative Neoclassical trompe l'oeil manner, 1994.
- Noncontributing open space, southeast corner Seventh and York Streets: parking lot for National Band and Tag Company.
36. 723-725 York Street - NONCONTRIBUTING BUILDING: currently the National Band and Tag Co. A twentieth century industrial building of large scale, built in the 1950s; poured concrete and brick construction.
37. 737 York Street - Late nineteenth century commercial/residential building with false mansard front roof, iron storefront with double-leaf door, shingled oriole in second story of south elevation.
38. 801 York Street - First Baptist Church, built c. 1890. Gothic Revival church of simple design, with square corner tower and corbeled brickwork. Rear addition added in early 20th century.
39. 803 York Street - First Baptist Church Bible School. Overscaled brick facade with exaggerated Classical Revival ornament is actually a false front for a much more modest frame building behind. (This arrangement allowed light to penetrate the windows of the adjacent First Baptist Church.) Built after 1910 on site formerly

United States Department of the Interior  
National Park ServiceNational Register of Historic Places  
Continuation SheetSection number 7 Page 9 York Street Historic District  
Campbell Co., KY

occupied by row of houses.

40. 815 York Street - Ornate Queen Anne residence of large scale and eclectic design, incorporating both Romanesque Revival and Free Classic detailing. Full-height tower, rock-faced stone ornament. Indicated on 1894 Sanborn map; likely built in the early 1890s.

41. 817 York Street - Two-and-a-half story Second Empire side-passage dwelling, c. 1880, with slate-clad mansard-front roof, and narrow facade dominated by angled bay. Pressed-metal hoodmolds and cornice of geometric design.

42. 821 York Street - The E.W. Hawkins home, built c. 1860; during the early 20th century used as a Junior Order of Automotive Mechanics lodge hall. Large and imposing center-passage dwelling in Greek Revival style. Pilastered facade, Doric in-antis entrance, second-story Palladian window. Angled bay added in the late 19th century.

43. 825 York Street - Side-passage Greek Revival residence with three-bay facade, built c. 1860.

Noncontributing open space: parking lot for Muehlenkamp-Erschell Funeral Home.

44. 835 York Street - The O'Shaughnessy House, built c. 1870-75; currently the Muehlenkamp-Erschell Funeral Home. Imposing, high-style Second Empire villa of center-passage plan: patterned slate mansard roof, central three-story belvedere; Corinthian portico added c. 1900. Brick sandblasted.

45. 839 York Street - Queen Anne dwelling of large scale and irregular plan, built early 1890s. Steeply-pitched cross-gabled roof, turret, projecting bays. Tall retaining wall of rock-faced limestone.

46. 841 York Street - Small-scale Newport-Covington plan house with a front door; late Greek Revival detailing.

47. 845 York Street - Newport-Covington Plan house similar to 841.

48. 847 York Street - Early 20th century residence, built after 1910 on a formerly vacant lot. Nearly cubic in form, with low-pitched hipped roof. Half-width wooden porch. Built at front lot line.

49. 901 York Street - Built as a residence; currently the Henry Hosea House soup kitchen and outreach center. Italianate center-passage residence of large scale and

United States Department of the Interior  
National Park ServiceNational Register of Historic Places  
Continuation SheetSection number 7 Page 10 York Street Historic District  
Campbell Co., KY

cubical massing; low-pitched hipped roof with wooden cornice with elliptical frieze windows. Some facade bays bricked in and replacement windows installed in original openings. Original front entrance addresses Ninth Street.

50. 905 York Street - Contributing but altered. Newport-Covington plan two-story dwelling with bracketed cornice. Picture window installed in first story facade.

51. 909 York Street - Side-passage Italianate townhouse of three-bay facade. Ornate, pressed-metal, Eastlake-inspired ornamentation. Floor-to-ceiling windows, recessed entrance, standing seam metal roof.

52. 911 York Street - Side-passage three-bay dwelling with simple Italianate detailing. Pressed-metal trim of geometric design, standing seam metal roof.

53. 913 York Street - Newport-Covington Plan house in Italianate style, with incised Eastlake-inspired hoodmolds; built at front lot line. Prior to 1894 lot formerly occupied by a mattress/upholstery concern.

54. 915 York Street - Side-passage Italianate residence with exuberant pressed-metal ornamentation including cornice, hoodmolds and entry frontispiece. Facade sash replaced with metal casements.

55. 919 York Street - Newport-Covington Plan vernacular house with a front door. Understated Greek Revival/Italianate detailing.

56. 921 York Street - NONCONTRIBUTING BUILDING: one-story frame vernacular house of small scale, re-sided and greatly altered.

57. 925-927 York Street - Duplex version of Newport-Covington Plan house with a front door. Early Italianate detailing. Each unit two bays wide, with floor-to-ceiling windows surmounted by pedimented hoods.

58. 929 York Street - Newport-Covington Plan house with a front door; transitional Greek Revival-Italianate styling.

59. 931 York Street - Side-passage Greek Revival residence. Recessed entrance framed by pilasters and shouldered architrave; acanthine cornice brackets. Replacement windows and door installed, box gutters removed, windows shortened. Brick front walkway, stone pillars at front lot line.

60. 935 York Street - Contributing but altered. Newport-Covington Plan Italianate

United States Department of the Interior  
National Park Service

OCT 4 1995

National Register of Historic Places  
Continuation SheetYORK STREET HISTORIC DISTRICT

Campbell County, KY

Section number 7 Page 10

- cubical massing; low-pitched hipped roof with wooden cornice with elliptical frieze windows. Some facade bays bricked in and replacement windows installed in original openings. Original front entrance addresses Ninth Street.
50. 905 York Street - Contributing but altered. Newport-Covington plan two-story dwelling with bracketed cornice. Picture window installed in first story facade.
51. 909 York Street - Side-passage three-bay dwelling with simple Italianate detailing. Pressed-metal trim of geometric design, standing seam metal roof.
52. 911 York Street - Side-passage Italianate townhouse of three-bay facade. Ornate, pressed-metal, Eastlake-inspired ornamentation. Floor-to-ceiling windows, recessed entrance, standing seam metal roof.
53. 913 York Street - Newport-Covington Plan house in Italianate style, with incised Eastlake-inspired hoodmolds; built at front lot line. Prior to 1894 lot formerly occupied by a mattress/upholstery concern.
54. 915 York Street - Side-passage Italianate residence with exuberant pressed-metal ornamentation including cornice, hoodmolds and entry frontispiece. Facade sash replaced with metal casements.
55. 919 York Street - Newport-Covington Plan vernacular house with a front door. Understated Greek Revival/Italianate detailing.
56. 921 York Street - NONCONTRIBUTING BUILDING: one-story frame vernacular house of small scale, re-sided and greatly altered.
57. 925-927 York Street - Duplex version of Newport-Covington Plan house with a front door. Early Italianate detailing. Each unit two bays wide, with floor-to-ceiling windows surmounted by pedimented hoods.
58. 929 York Street - Newport-Covington Plan house with a front door; transitional Greek Revival-Italianate styling.
59. 931 York Street - Side-passage Greek Revival residence. Recessed entrance framed by pilasters and shouldered architrave; acanthine cornice brackets. Replacement windows and door installed, box gutters removed, windows shortened. Brick front walkway, stone pillars at front lot line.
60. 935 York Street - Contributing but altered. Newport-Covington Plan Italianate

United States Department of the Interior  
National Park ServiceNational Register of Historic Places  
Continuation SheetSection number 7 Page 11 York Street Historic District  
Campbell Co., KY

house with a front door. Vinyl siding.

61. 937 York Street - Contributing but altered. Turn of the century vernacular balloon frame residence, concrete block foundation, vinyl siding, undetermined plan, shed roof with undetermined covering.

62. 941 York Street - Contributing but altered. Newport-Covington plan Italianate house with a front door. Standing seam metal roof. Insulbrick siding.

63. 943 York Street - Newport-Covington Plan Italianate house with a front door. Frame and brick front porch added in the 1920s.

64. 947 York Street - NONCONTRIBUTING BUILDING. Originally a drugstore; currently Bonnie's Hair Salon. An early twentieth century building, first depicted on 1910 Sanborn map; concrete foundation, frame construction, synthetic siding. Storefront and windows greatly altered.

#### 8. Statement of significance

The York Street Historic District meets Criterion C within the theme of architecture as a distinguishable entity with architectural significance whose components lack individual distinction. The district contains a solid inventory of locally typical middle- and upper-class domestic architecture of the second half of the 19th century, as well as some more notable examples of domestic, institutional and commercial architecture. While the preponderance of buildings reflect the Greek Revival and Italianate styles, fine examples of Second Empire, Gothic Revival, Queen Anne and Neo-Classical Revival styles also enliven the streetscape. Although the development patterns, and most of the building types and styles represented are similar to contemporary neighborhoods of Newport, this area of York Street possesses locally superior integrity of design, workmanship, materials, feeling and association. The York Street Historic District's period of significance extends from 1848 to 1939, bracketed by the construction dates of its earliest and most recent contributing buildings.

The architecture of the district reflects the development of residential architecture in Newport from the 1850s through the 1920s. Many of the city's oldest surviving buildings reflect the Greek Revival style, popular in northern Kentucky from the 1840s through the mid-1860s. Newport's Greek Revival residences are generally restrained in design, with simple, symmetrical, classically-inspired ornamentation. Characteristic details include recessed entrances framed by pilasters and shouldered architraves; and doorways featuring sidelights, three-pane transoms and unglazed,

8. Statement of Significance

Applicable National Register Criteria

(Mark "x" in one or more boxes for the criteria qualifying the property for National Register listing.)

- A Property is associated with events that have made a significant contribution to the broad patterns of our history.
B Property is associated with the lives of persons significant in our past.
C Property embodies the distinctive characteristics of a type, period, or method of construction or represents the work of a master, or possesses high artistic values, or represents a significant and distinguishable entity whose components lack individual distinction.
D Property has yielded, or is likely to yield, information important in prehistory or history.

Areas of Significance

(Enter categories from instructions)

architecture

Period of Significance

1848 - 1939

Significant Dates

1848, 1882, 1888

Significant Person

(Complete if Criterion B is marked above)

n/a

Cultural Affiliation

n/a

Architect/Builder

unknown

Criteria Considerations

(Mark "x" in all the boxes that apply.)

Property is:

- A owned by a religious institution or used for religious purposes.
B removed from its original location.
C a birthplace or grave.
D a cemetery.
E a reconstructed building, object, or structure.
F a commemorative property.
G less than 50 years of age or achieved significance within the past 50 years.

Narrative Statement of Significance

(Explain the significance of the property on one or more continuation sheets.)

9. Major Bibliographical References

Bibliography

(Cite the books, articles, and other sources used in preparing this form on one or more continuation sheets.)

Previous documentation on file (NPS):

- preliminary determination of individual listing (36 CFR 67) has been requested
previously listed in the National Register
previously determined eligible by the National Register
designated a National Historic Landmark
recorded by Historic American Buildings Survey #
recorded by Historic American Engineering Record #

Primary location of additional data:

- X State Historic Preservation Office
Other State agency
Federal agency
Local government
University
Other

Name of repository:

KY Heritage Council

United States Department of the Interior  
National Park ServiceNational Register of Historic Places  
Continuation SheetSection number 8 Page 12 York Street Historic District  
Campbell Co., KY

## 8. Statement of significance

The York Street Historic District meets Criterion C within the theme of architecture as a distinguishable entity with architectural significance whose components lack individual distinction. The district contains a solid inventory of locally typical middle- and upper-class domestic architecture of the second half of the 19th century, as well as some more notable examples of domestic, institutional and commercial architecture. While the preponderance of buildings reflect the Greek Revival and Italianate styles, fine examples of Second Empire, Gothic Revival, Queen Anne and Neo-Classical Revival styles also enliven the streetscape. Although the development patterns, and most of the building types and styles represented are similar to contemporary neighborhoods of Newport, this area of York Street possesses locally superior integrity of design, workmanship, materials, feeling and association. The York Street Historic District's period of significance extends from 1848 to 1939, bracketed by the construction dates of its earliest and most recent contributing buildings.

The architecture of the district reflects the development of residential architecture in Newport from the 1850s through the 1920s. Many of the city's oldest surviving buildings reflect the Greek Revival style, popular in northern Kentucky from the 1840s through the mid-1860s. Newport's Greek Revival residences are generally restrained in design, with simple, symmetrical, classically-inspired ornamentation. Characteristic details include recessed entrances framed by pilasters and shouldered architraves; and doorways featuring sidelights, three-pane transoms and unglazed, paneled doors. Entrances of this type can be seen at 931 and 916 York, among other examples. Stone lintels, like those of 812 and 814 York, or pedimented and bracketed window hoods adorn the facade bays; simple cornices enhanced by mutule blocks, such as those in evidence at 821 York, or decorative small brackets like those at 931 York, complete the facade composition. Side elevations may feature single or double galleries, with balustrades of cast-iron or flat-sawn wood; such a feature can be seen at 734 York. Roofs are generally side-gabled and, like those of 812 and 814 York, may include stepped parapets.

Within the city, the York Street district includes an unrivaled collection of Greek Revival residences; although Grecian-styled houses are scattered through central and west Newport, in no other part of the city can so many excellent examples be found. At one time many Greek Revival houses once stood along the riverfront and on the fringes of downtown; most have been lost to urban renewal and floodwall construction.

Floorplans among the Greek Revival homes in the district are as diverse as the range of plans found elsewhere in the city. They range from the small-scale townhouses at



United States Department of the Interior  
National Park ServiceNational Register of Historic Places  
Continuation SheetSection number 8 Page 13 York Street Historic District  
Campbell Co., KY

812 and 814 York Street, with narrow, two-bay facades and modest proportions; to the more substantial side-passage houses at 825, 916 and 931; to the landmark Hawkins House at 821 York, one of two center-passage Greek Revival dwellings in the city. The Hawkins House exhibits a paneled facade articulated by full-height brick "pilasters." The front entrance facade is framed by Doric colonettes; a Palladian window is centered in the second story. Center-passage houses, found nearly everywhere in Kentucky, were not common in the city, perhaps because they required larger lots than narrower housing forms.

By the 1860s, the Greek Revival style had been succeeded as by the Italianate mode as a national style of nearly universal popularity. The Italianate style was popular in northern Kentucky from the mid-1860s through the early 1880s. Early examples, such as 908 York, have transitional Greek Revival styling, while those of the early 1880s, such as 938 York, reflect the influence of the Eastlake movement. Newport Italianate houses combine the classical symmetry of the Greek Revival era with a new emphasis on verticality and richer, more varied and three-dimensional ornamentation. Many have recessed entrances with ornate frontispieces of stone or metal, like that of 915 and 734 York. As examples in the district illustrate, window hoods may be pedimented, flat-arched, and segmentally- or fully-arched. Others incorporate incised stone lintels, such as those of 913 York. Nearly all Newport Italianate houses, including those of the district, feature bracketed cornices. The majority of Italianate houses in the district and in the city as a whole are built on the side-passage or the Covington-Newport floorplan; 901 York, on the other hand, is a locally rare example of a center-passage residence in the Italianate style. It is also one of the few Italianate homes in the city with a hipped roof.

From the smallest shotgun house to the most impressive palazzo, good examples of the Greek Revival and Italianate styles successfully convey a fine sense of proportion, a dignified attitude and a successful balance of ornament with restraint—all qualities much in evidence by the examples of the district.

By the mid-1880s, the Queen Anne style had reached America. Queen Anne houses were complex in plan, eclectic in taste and highly ornamented, and often incorporated a variety of materials and textures to delight the eye. Large-scale examples of the style, such as 815 and 839 York, employed complex roof forms: hipped with lower gables, pyramidal or cross-gabled. Newport Queen Anne houses employ decorative masonry; varied window forms; art glass; and one or more ornate porches, of intricately-patterned wood or masonry. Some, like 815 York, incorporate turrets or towers. Although Queen Anne houses are common in the Mansion Hill and East Newport districts of the east side, they are rarely seen on the west side of the city.

United States Department of the Interior  
National Park ServiceNational Register of Historic Places  
Continuation SheetSection number 8 Page 14 York Street Historic District  
Campbell Co., KY

Successful examples of the Queen Anne style, such as 815 and 839 York, achieve complex forms and a picturesque impression without overwhelming the eye with detail.

The York Street district comprises the best-preserved mid-19th century neighborhood in the city. While the east side districts, already listed, represent the late Victorian era, the West End was developed for the most part c. 1850-1875. Although the West End as a whole contains a wealth of vernacular and stylish architecture of the second and third quarters of the 19th century, the integrity of many of its streetscapes has been diminished by intrusions or inappropriate remodelling. York Street, in contrast, has remained largely free of such discordant elements and remains the most cohesive street on the west side. After remaining largely stable for many years, the neighborhood is now in the early stages of revitalization, its fine building stock being restored. Historic designation should help bolster the renewal efforts already underway.

Although the York Street Historic District was nominated on the basis of architectural significance, it may also possess eligibility under Criterion A within the theme of community development/town planning. Areas adjacent to the district were excluded on the basis of visual continuity; some may, however, also be eligible under one or more contexts.

United States Department of the Interior  
National Park ServiceNational Register of Historic Places  
Continuation SheetYork Street Historic District  
Campbell County, KYSection number 9 Page 15

## 9. Bibliography

Campbell County Kentucky History and Genealogy. Volume 1. Falmouth: The Falmouth Outlook, 1978.

Campbell County Kentucky History and Genealogy. Volume 2. Falmouth: The Falmouth Outlook, 1981.

1990 Census of Population and Housing: Summary Population and Housing Characteristics, Kentucky. U.S. Dept. of Commerce, August 1991

Hartman, Margaret Strebel. The Washington Fire Engine and Hose Co. No. 1. Newport: Margaret Strebel Hartman, 1963.

"Historic Walking Tour of Newport, Kentucky," Campbell County Bicentennial Committee, October 1974.

"Newport, Kentucky." New York: Sanborn Map Company, 1886, 1894, 1910.

Perkins, E.C. The Borning of a Town. Newport, 'Cantuckee.' Ft. Thomas: E.C. Perkins, 1963.

Stegar, Dr. J.W. et. al. History of First Baptist Church 1812-1962. Newport, 1963.

Warminski, Margo. National Register Nomination of the East Newport Historic District.

Warminski, Margo. National Register Nomination of the Salem United Methodist Church, 1986.

Williams Newport City Directories: 1860, 1861, 1871-1872, 1880-1881, 1882-1883, 1884-1885, 1886- 1887, 1888-1889, 1895.

Walsh, Rita. Northern Kentucky Townhouse Study. Gray and Pape, Cincinnati, Ohio, 1993. Manuscript available from the Kentucky Heritage Council.

York St. Historic District  
Name of Property

Campbell Co., KY  
County and State

**10. Geographical Data**

**Acreage of Property** 7 acres

**UTM References**

(Place additional UTM references on a continuation sheet.)

1 | 1 | 6 | 7 | 1 | 6 | 6 | 9 | 0 | 4 | 3 | 2 | 9 | 4 | 6 | 0 |  
Zone Easting Northing  
2 | 1 | 6 | 7 | 1 | 6 | 7 | 5 | 0 | 4 | 3 | 2 | 9 | 5 | 0 | 0 |

3 | 1 | 6 | 7 | 1 | 7 | 0 | 4 | 0 | 4 | 3 | 2 | 9 | 1 | 2 | 0 |  
Zone Easting Northing  
4 | 1 | 6 | 7 | 1 | 6 | 9 | 6 | 0 | 4 | 3 | 2 | 9 | 0 | 7 | 0 |

See continuation sheet

**Verbal Boundary Description**

(Describe the boundaries of the property on a continuation sheet.)

**Boundary Justification**

(Explain why the boundaries were selected on a continuation sheet.)

**11. Form Prepared By**

name/title Margaret Warminski Historic Preservation consultant  
organization City of Newport date December 5, 1994  
street & number 340 E. Second St. telephone 606-581-2883  
city or town Newport state KY zip code 41071

**Additional Documentation**

Submit the following items with the completed form:

**Continuation Sheets**

**Maps**

A USGS map (7.5 or 15 minute series) indicating the property's location.

A Sketch map for historic districts and properties having large acreage or numerous resources.

**Photographs**

Representative black and white photographs of the property.

**Additional items**

(Check with the SHPO or FPO for any additional items)

**Property Owner**

(Complete this item at the request of SHPO or FPO.)

name \_\_\_\_\_  
street & number \_\_\_\_\_ telephone \_\_\_\_\_  
city or town \_\_\_\_\_ state \_\_\_\_\_ zip code \_\_\_\_\_

**Paperwork Reduction Act Statement:** This information is being collected for applications to the National Register of Historic Places to nominate properties for listing or determine eligibility for listing, to list properties, and to amend existing listings. Response to this request is required to obtain a benefit in accordance with the National Historic Preservation Act, as amended (16 U.S.C. 470 *et seq.*).

**Estimated Burden Statement:** Public reporting burden for this form is estimated to average 18.1 hours per response including time for reviewing instructions, gathering and maintaining data, and completing and reviewing the form. Direct comments regarding this burden estimate or any aspect of this form to the Chief, Administrative Services Division, National Park Service, P.O. Box 37127, Washington, DC 20013-7127; and the Office of Management and Budget, Paperwork Reductions Projects (1024-0018), Washington, DC 20503.

United States Department of the Interior  
National Park ServiceNational Register of Historic Places  
Continuation SheetSection number 10 Page 16 York Street Historic District  
Campbell Co., KY

## 10. Boundary description

The York Street Historic District is located within the corporate limits of Newport. Resources are located along York and West Eighth Streets. District boundaries follow property lines and street rights-of-way. (Please refer to district map with boundaries drawn.)

Beginning at a point in the south line of West Seventh Street, being the northwest corner of 702 York Street; then proceeding east to the southeast corner of Seventh and York Streets; then north with the east line of York Street to the northwest corner of 649 York; then east with the north line of 649 York to its northeast corner; then south along the east (rear) lines of 649-947 York Street, to the north line of East Tenth Street; then west with said line, crossing York Street, to the southwest corner of 948 York Street; then north with the west (rear) lines of 948-810 York Street, to the south line of 802 York Street; then west with the south (rear) lines of 802 York Street and 16 and 18 West Eighth Street to the east line of Putnam Street; then along said line, crossing Eighth Street, to the northwest corner of 21 West Eighth Street; then east along the north lines of 21 and 19 West Eighth Street to the rear line of 738 York Street; then proceeding north along the rear lines of 738-702 York Street to the place of beginning.

## Boundary justification

This boundary includes all the resources contributing to the district and excludes areas of lesser integrity, different scale or markedly different land uses. East of York Street is the Monmouth Street central business district, which in the near future will be nominated as a separate district. South of Tenth Street is a residential block that includes many altered buildings and vacant lots along with the numerous historic structures. Paralleling York Street on the west is Putnam Street, a narrow, alley-like street of modest residences markedly different in scale from those of the district; many of them have been considerably altered. At the southwest corner of Eighth and Putnam Streets is the former Newport High School, a 1920s-vintage edifice with a large modern addition under construction at the rear. At the northwest corner of Seventh and York Streets a supermarket is currently under construction and has been left out of the district. The northern edge of the district is formed by empty lots and intrusions.

United States Department of the Interior  
National Park Service

National Register of Historic Places  
Continuation Sheet

Section number \_\_\_\_\_ Photos \_\_\_\_\_ Page 17 York Street Historic District  
Campbell Co., KY

---

Photograph key

1. 724-26 York Street  
York Street Historic District (same for all photographs)  
Newport, Kentucky (same for all photographs)  
Margaret Warminski (same for all photographs)  
October 1994 (same for all photographs)  
Negative: Kentucky Heritage Council, Frankfort, Kentucky (same for all photographs)  
Looking west  
Photo 1
2. 737 York Street  
Looking east  
Photo 2
3. View of 800 block of York Street, west side; Salem Methodist Church at right of photograph  
Looking southwest  
Photo 3
4. E.W. Hawkins House, 821 York Street  
Looking east  
Photo 4
5. O'Shaughnessy House, 835 York Street; 839 York Street at right of photograph  
Looking northeast  
Photo 5
6. View of north end of 900 block of York Street, west side; pictured, from left to right, are 916, 914 and 908 York Street  
Looking northwest  
Photo 6
7. View of south end of 900 block of York Street; pictured, from left to right, are 948, 944-46, 942, 938 and 936 York Street  
Looking northwest from Tenth Street  
Photo 7
8. View of north end of 900 block of York Street, east side; pictured, from left to right, are 901, 905, 909, 911 and 913 York Street  
Looking northeast

United States Department of the Interior  
National Park Service

**National Register of Historic Places  
Continuation Sheet**

Section number \_\_\_\_\_ Photos \_\_\_\_\_ Page 18 York Street Historic District  
Campbell Co., KY

---

Photo 8

9. View of south end of 900 block of York Street, east side; pictured, from left to right, are 931, 935, 937, 941 and 943 York Street  
Looking southeast  
Photo 9

United States Department of the Interior  
National Park ServiceNational Register of Historic Places  
Continuation SheetProperty owners \_\_\_\_\_ 19 York Street Historic District  
Section number \_\_\_\_\_ Page \_\_\_\_\_ Campbell Co., KY

Property	Name/address of owner
1. 702 York Street	Gleason Electric, Inc. 702 York Street, Newport, KY 41071
2. 706 York Street	Lyon Financial Services, 115 West College Drive, Marshall, MN 56258
3. York Street Congregational Church	York Street Congregational Church
4. 724-26 York Street	Lawrence J. Schwab, 970 Avondale Avenue, Cincinnati, OH 45229
5. 734 York Street	William F. Siebert, 23 Carrington Point, Fort Thomas, KY 41075
6. 738 York Street	David Hosea, P.O. Box 398, Newport, KY 41071
7. 15 West Eighth Street	Terry Rasche, 50 Crescent Avenue, Woodlawn, KY 41076
8. 17 West Eighth Street	Albina Michaelson, 17 West Eighth Street, Newport, KY 41071
9. 16 West Eighth Street	Grover & Ruth Ann Holland, 16 West Eighth Street, Newport, KY 41071
10. 18 West Eighth Street	Nina Shouse, 18 West Eighth Street, Newport, KY 41071
11. 802 York Street	Footlighters, Inc., 802 York Street, Newport, KY 41071
12. 810 York Street	Emil & Dolores F. Lohr, 810 York Street, Newport, KY 41071
13. 812 York Street	Allen & Loureena Weber, P.O. Box 75, Newport, KY 41071
14. 814 York Street	Allen & Loureena Weber, P.O. Box 75, Newport, KY 41071



United States Department of the Interior  
National Park ServiceNational Register of Historic Places  
Continuation SheetProperty owners \_\_\_\_\_  
Section number \_\_\_\_\_ Page 20 \_\_\_\_\_York Street Historic District  
Campbell Co., KY

- 
- |                           |   |
|---------------------------|---|
| 15. 816 York Street       | Kimberly Coleman, 816 York Street, Newport, KY 41071                                    |
| 16. 822 York Street       | J. J. Radel Co., 652 State Avenue, Cincinnati, OH 45205                                 |
| 17. 830 York Street       | First Church of the Nazarene, 830 York Street, Newport, KY 41071                        |
| 18. Nazarene church annex | First Church of the Nazarene, 830 York Street, Newport, KY 41071                        |
| 19. 844 York Street       | Louis Hayden, 110 Kentucky Drive, Newport, KY 41071                                     |
| 20. 846 York Street       | J.G.M. Inc., 846 York Street, Newport, KY 41071   |
| 21. 908 York Street       | Carl W. Wilson, Jr., 5449 Glen Ivy Place, Pinellas Park, FL 34666                       |
| 22. 914 York Street       | Richard J. & Jane Antony, P.O. Box 305, Alexandria, KY 41001                            |
| 23. 916 York Street       | G. William Stith, 109 West Fifth Street, Covington, KY 41011                            |
| 24. 918 York Street       | Anna L. Henzerling, c/o William F. & Royleen Seiger, 918 York Street, Newport, KY 41071 |
| 25. 920 York Street       | Robert M. & Della M. Dunaway, 920 York Street, Newport, KY 41071                        |
| 26. 924 York Street       | Elva Payne, 924 York Street, Newport, KY 41071  |
| 27. 926 York Street       | Lena Basile, 926 York Street, Newport, KY 41071   |
| 28. 928 York Street       | Orville & V.E. Kessell, 918 Orchard Street, Newport, KY 41071                           |
| 29. 930 York Street       | Allen & Loureena Weber, P.O. Box 75, Newport, KY 41071                                  |

United States Department of the Interior  
National Park ServiceNational Register of Historic Places  
Continuation SheetProperty owners \_\_\_\_\_  
Section number \_\_\_\_\_ Page 21 \_\_\_\_\_York Street Historic District  
Campbell Co., KY

- 
- |                         |   |
|-------------------------|---|
| 30. 936 York Street     | Allen & Loureena Weber, P.O. Box 75,<br>Newport, KY 41071   |
| 31. 938 York Street     | Allen & Loureena Weber, P.O. Box 75,<br>Newport, KY 41071   |
| 32. 942 York Street     | Allen & Loureena Weber, P.O. Box 75,<br>Newport, KY 41071   |
| 33. 944-46 York Street  | 944: Allen & Loureena Weber, P.O. Box 75,<br>Newport, KY 41071<br>946: Lillian Plummer, 946 York Street,<br>Newport, KY 41071 |
| 34. 948 York Street     | Newport Drug Center, Inc., 948 York Street,<br>Newport, KY 41071  |
| 35. 649 York Street     | Deborah C. Peluso, 51 Summer Hill, Newport,<br>KY 41071   |
| 36. 723-25 York Street, | International Identification Inc., 723-25<br>York Street, Newport, KY 41071   |
| 37. 737 York Street     | Allen & Loureena Weber, P.O. Box 75,<br>Newport, KY 41071   |
| 38. 801 York Street     | First Baptist Church, 801 York Street,<br>Newport, KY 41071   |
| 39. 803 York Street     | First Baptist Church, 801 York Street,<br>Newport, KY 41071   |
| 40. 815 York Street     | Earl L. Meyers, 209 John's Hill Road,<br>Highland Heights, KY 41076   |
| 41. 817 York Street     | Earl L. Meyers, 209 John's Hill Road,<br>Highland Heights, KY 41076   |
| 42. 821 York Street     | Earl L. Meyers, 209 John's Hill Road,<br>Highland Heights, KY 41076   |
| 43. 825 York Street     | Blaine G. & Betty J. Mozea, 39 Haywood<br>Court, Fort Thomas, KY 41075  |
| 44. 835 York Street     | E.M. Partnership, 835 York Street, Newport,   |

United States Department of the Interior  
National Park ServiceNational Register of Historic Places  
Continuation SheetProperty owners \_\_\_\_\_  
Section number \_\_\_\_\_ Page 22York Street Historic District  
Campbell Co., KY

- 
- KY 41071
45. 839 York Street Doyle Bowling, c/o PNC Mortgage Service,  
Louisville, KY 40296
46. 841 York Street Gary & Brenda Williams, R.R. #1, Box 182,  
Beaufort, MO 63013
47. 845 York Street Harold F. & Peggy L. Kramer, 845 York  
Street, Newport, KY 41071
48. 847 York Street Nancy A. Edward, 847 York Street, Newport,  
KY 41071
49. 901 York Street David S. Hosea, P.O. Box 398, Newport, KY  
41071
50. 905 York Street Edward T. Gamel, c/o 21 Sadye Court, Fort  
Thomas, KY 41075
51. 909 York Street Darlene M. Glenn, 909 York Street, Newport,  
KY 41071
52. 911 York Street Roger D. & Debra L. Webb, 35 Sturbridge  
Drive, Cold Spring, KY 41076
53. 913 York Street Lonza Beverly Wilson, 2435 South Main  
Street, Highland Heights, KY 41076
54. 915 York Street Jack & Peggy Riley, 113 Park Place, Fort  
Thomas, KY 41075
55. 919 York Street Creed & Sadie Webb, 846 Monroe Street,  
Newport, KY 41071
56. 921 York Street Thomas R. & Robert T. Antony, 109 Regency  
Court, Highland Heights, KY 41076
57. 925-27 York Street Allen & Loureena Weber, P.O. Box 75,  
Newport, KY 41071
58. 929 York Street Clara Hodge, 929 York Street, Newport, KY  
41071
59. 931 York Street Arthur & C.J. Hoffman, 846 Pat Court,  
Cincinnati, OH 45238

United States Department of the Interior  
National Park Service


**National Register of Historic Places  
Continuation Sheet**

Section number \_\_\_\_\_ Property owners \_\_\_\_\_ Page 23

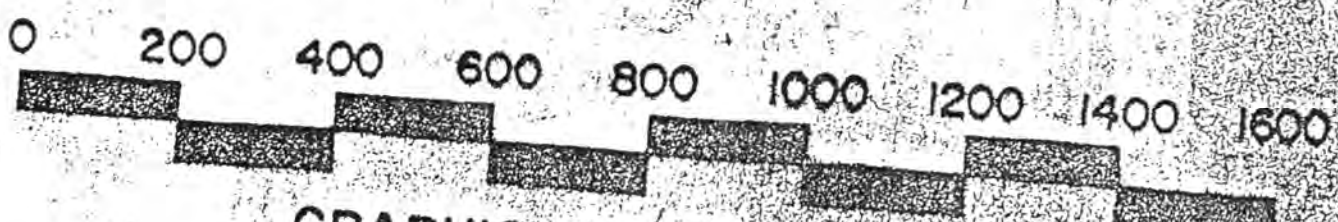
York Street Historic District  
Campbell Co., KY

- 
- |     |                 |   |
|-----|-----------------|---|
| 60. | 935 York Street | Raymond J. & M. Boudry, 935 York Street,<br>Newport, KY 41071       |
| 61. | 937 York Street | Orville G. & V.E. Kessell, 918 Orchard<br>Street, Newport, KY 41071 |
| 62. | 941 York Street | Orville G. & V.E. Kessell, 918 Orchard<br>Street, Newport, KY 41071 |
| 63. | 943 York Street | Allen & Loureena Weber, P.O. Box 75,<br>Newport, KY 41071           |
| 64. | 947 York Street | Herbert & L.M. Stodghill, 947 York Street,<br>Newport, KY 41071     |

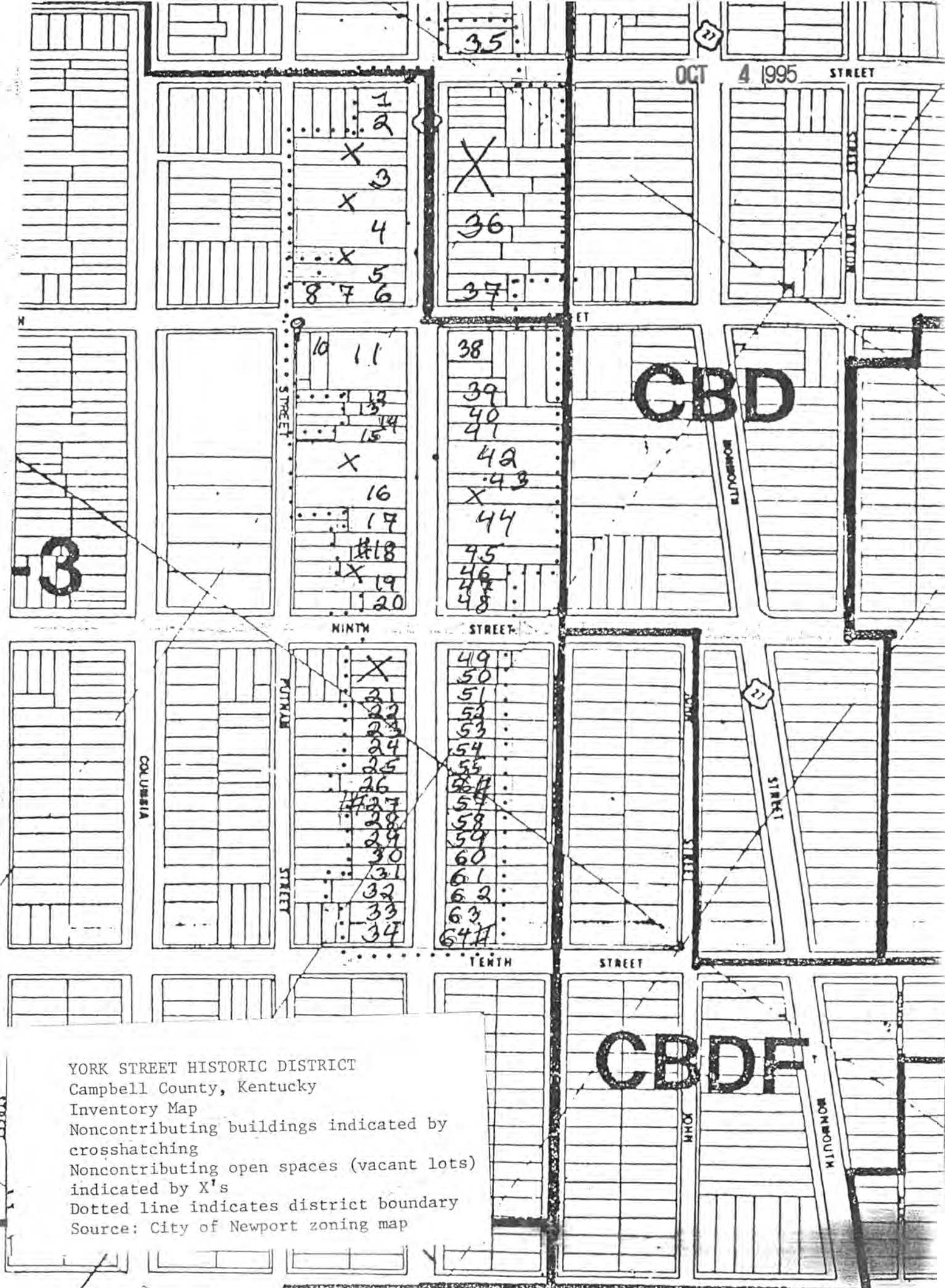


YORK STREET HISTORIC DISTRICT →  
 Campbell Co., KY  
 Map 1: Inventory Map  
 noncontributing buildings indicated  
 by cross-hatching 

# CITY OF NEWPORT CAMPBELL COUNTY, KENTUCKY



GRAPHIC SCALE IN FEET



YORK STREET HISTORIC DISTRICT

Campbell County, Kentucky

Inventory Map

Noncontributing buildings indicated by crosshatching

Noncontributing open spaces (vacant lots) indicated by X's

Dotted line indicates district boundary

Source: City of Newport zoning map

Photo #8  
N. end 900 blk, Yonk, e. side



Yonk St. Historic District  
Campbell Co., KY

Photo #7  
S. end, 900 blk. Yonk, W. side



Yonk St. Historic District  
Campbell Co., KY

**United States Department of the Interior  
National Park Service**

**National Register of Historic Places  
Continuation Sheet**

Section number \_\_\_\_\_ Page \_\_\_\_\_

---

York Street Historic District Campbell County KENTUCKY 95000640

ADDITIONAL DOCUMENTATION APPROVED

*Gregory M. Rapsley 10/27/95*



UNITED STATES DEPARTMENT OF THE INTERIOR  
NATIONAL PARK SERVICE

NATIONAL REGISTER OF HISTORIC PLACES  
EVALUATION/RETURN SHEET

REQUESTED ACTION: NOMINATION

PROPERTY NAME: York Street Historic District

MULTIPLE NAME:

STATE & COUNTY: KENTUCKY, Campbell

DATE RECEIVED: 4/24/95      DATE OF PENDING LIST: 5/10/95  
DATE OF 16TH DAY: 5/26/95      DATE OF 45TH DAY: 6/08/95  
DATE OF WEEKLY LIST:

REFERENCE NUMBER: 95000640

NOMINATOR: STATE

REASONS FOR REVIEW:

APPEAL: N    DATA PROBLEM: N    LANDSCAPE: N    LESS THAN 50 YEARS: N  
OTHER: N    PDIL: N    PERIOD: N    PROGRAM UNAPPROVED: N  
REQUEST: N    SAMPLE: N    SLR DRAFT: N    NATIONAL: N

COMMENT WAIVER: N

ACCEPT     RETURN     REJECT    5/26/95 DATE

ABSTRACT/SUMMARY COMMENTS: Entered in the  
National Register

RECOM./CRITERIA \_\_\_\_\_

REVIEWER \_\_\_\_\_ DISCIPLINE \_\_\_\_\_

TELEPHONE \_\_\_\_\_ DATE \_\_\_\_\_

DOCUMENTATION see attached comments Y/N see attached SLR Y/N

UNITED STATES DEPARTMENT OF THE INTERIOR  
NATIONAL PARK SERVICE

NATIONAL REGISTER OF HISTORIC PLACES  
EVALUATION/RETURN SHEET

REQUESTED ACTION: ADDITIONAL DOCUMENTATION

PROPERTY NAME: York Street Historic District

MULTIPLE NAME:

STATE & COUNTY: KENTUCKY, Campbell

DATE RECEIVED: 10/04/95      DATE OF PENDING LIST:  
DATE OF 16TH DAY:      DATE OF 45TH DAY: 11/18/95  
DATE OF WEEKLY LIST:

REFERENCE NUMBER: 95000640

NOMINATOR: STATE

REASONS FOR REVIEW:

APPEAL: N    DATA PROBLEM: N    LANDSCAPE: N    LESS THAN 50 YEARS: N  
OTHER: N    PDIL: N    PERIOD: N    PROGRAM UNAPPROVED: N  
REQUEST: N    SAMPLE: N    SLR DRAFT: N    NATIONAL: N

COMMENT WAIVER: N

ACCEPT     RETURN     REJECT    10/27/95 DATE

ABSTRACT/SUMMARY COMMENTS:

RECOM./CRITERIA \_\_\_\_\_

REVIEWER \_\_\_\_\_ DISCIPLINE \_\_\_\_\_

TELEPHONE \_\_\_\_\_ DATE \_\_\_\_\_

DOCUMENTATION see attached comments Y/N see attached SLR Y/N

Photo # 1 724-26 Yonk St.



Yonk St. Historic District  
Campbell Co, KY

Photo # 2 737 Yonk  
St.



Yonk St. Historic  
Dist. Campbell Co, KY

photo # 3 View of 800 blk.  
Yonk St., West side



Yonk St. Historic District  
Campbell Co., KY

Photo # 4

Hawkins House



Yonk St. Historic District  
Campbell Co., KY

Photo #5  
O'Shaughnessy House



Yonk St. Historic District  
Campbell Co., KY

photo #6

N. end 900 blk. Yonk, W. side



Yonk St. Historic District  
Campbell Co., KY



Photo #8  
N. end 900 blk, Yonk, e. side



Yonk St, Historic District  
Campbell Co, KY



Yonk St. Historic District  
Campbell Co., KY Photo # 9

## Missing Core Documentation

Property Name	County, State	Reference Number
York Street Historic District	Campbell County, KY	95000640

The following Core Documentation is missing from this entry:

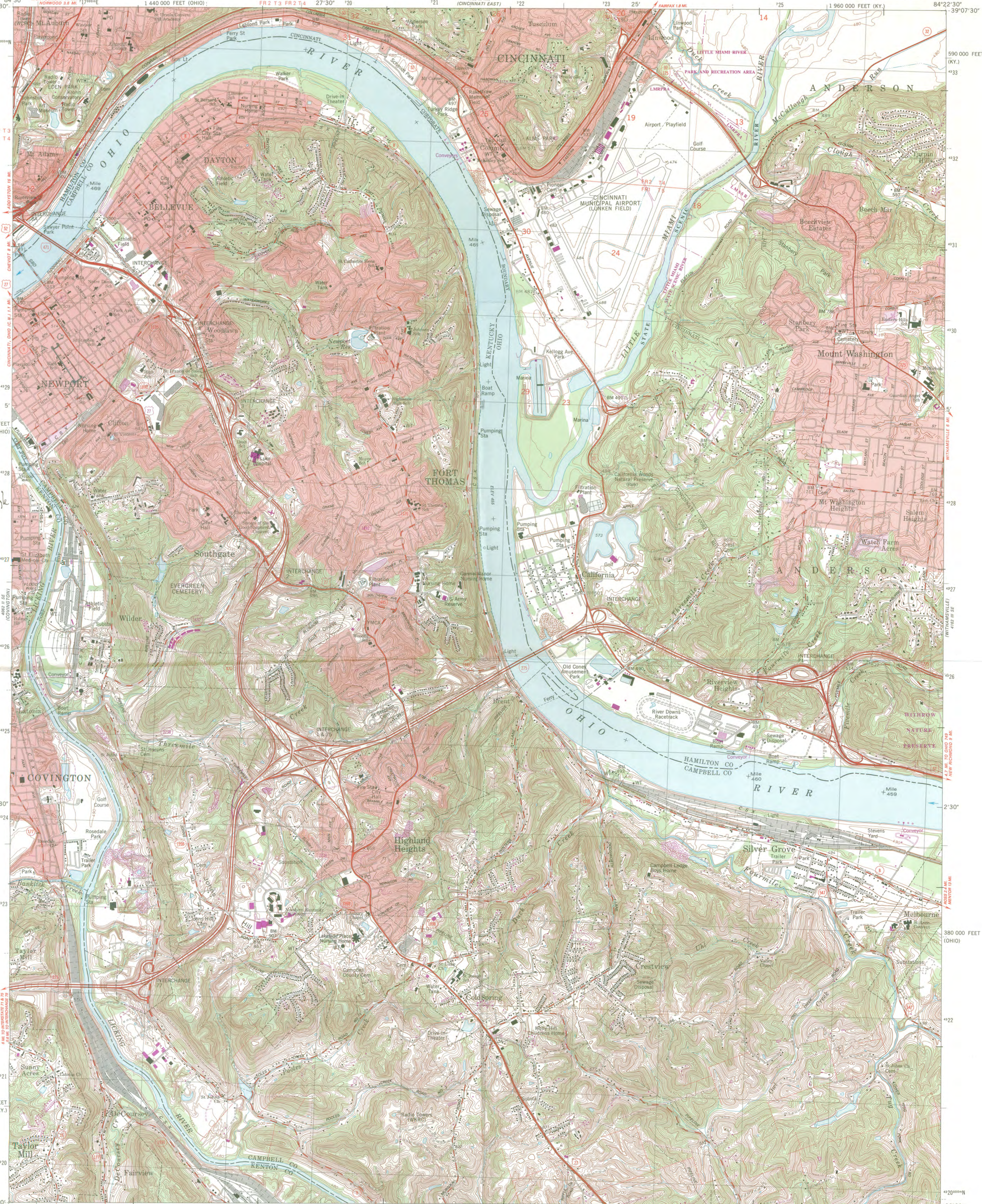
Nomination Form

Photographs (#7)

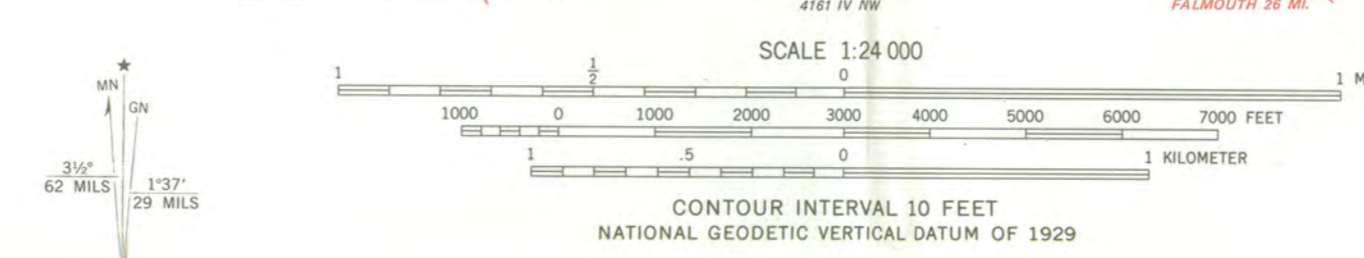
USGS Map

York Street Historic District Newport, Campbell Co., KY  
Zone 16  
Easting Nothing  
A: 716 640 4329 460  
B: 716 750 4329 500  
C: 717 040 4329 120  
D: 716 960 4329 070

Newport Quadrangle



Mapped, edited, and published by the Geological Survey  
Control by USGS, NOS/NOAA, USCE, City of Cincinnati, and Kentucky Highway Department  
Topography by photogrammetric methods from aerial photographs taken 1949, and in part by City of Cincinnati. Field checked 1954.  
Revised from aerial photographs taken 1977. Field checked 1983.  
Polyconic projection, 10,000-foot grid ticks based on Kentucky coordinate system, north zone, and Ohio coordinate system, south zone.  
1000-meter Universal Transverse Mercator grid, zone 16  
1927 North American Datum  
To place on the predicted North American Datum 1983 move the projection lines 3 meters south and 6 meters west as shown by dashed corner ticks  
Fine red dashed lines indicate selected fence and field lines where generally visible on aerial photographs. This information is unchecked.  
Red tint indicates areas in which only landmark buildings are shown  
Area east of the Little Miami River lies within the Virginia Military District  
Area west of the Little Miami River lies within the Between the Miamis  
Land lines based on the Great Miami River Base. Dotted land lines established by private subdivision of the Symmes Purchase.  
The state boundary as shown represents the approximate position of the low water line as determined from U. S. Corps of Engineers Ohio River charts, surveyed 1913, and supplementary information.



ROAD CLASSIFICATION

Primary highway, hard surface	Light-duty road, hard or improved surface
Secondary highway, hard surface	Unimproved road
Interstate Route	U.S. Route
	State Route

THIS MAP COMPLIES WITH NATIONAL MAP ACCURACY STANDARDS  
FOR SALE BY U. S. GEOLOGICAL SURVEY, DENVER, COLORADO 80225 OR RESTON, VIRGINIA 22092,  
KENTUCKY GEOLOGICAL SURVEY, LEXINGTON, KENTUCKY 40506,  
AND KENTUCKY DEPARTMENT OF COMMERCE, FRANKFORT, KENTUCKY 40601  
A FOLDER DESCRIBING TOPOGRAPHIC MAPS AND SYMBOLS IS AVAILABLE ON REQUEST

There may be private inholdings within the boundaries of the National or State reservations shown on this map  
Revisions shown in purple and woodland compiled in cooperation with State of Kentucky agencies from aerial photographs taken 1984 and other sources. Contours not revised. This information not field checked. Map edited 1987  
Purple tint indicates extension of urban areas

NEWPORT, KY.-OHIO  
SW/4 EAST CINCINNATI 15' QUADRANGLE  
39084-A4-TF-024

1983  
PHOTOREVISED 1987  
DMA 4162 III SW-SERIES 1983  
York Street Historic District  
Campbell Co., KY Map #3



**OFFICIAL ZONING MAP OF THE CITY OF NEWPORT, KENTUCKY**

DATE OF ADOPTION: \_\_\_\_\_  
 ORDINANCE NO. \_\_\_\_\_  
**REVISIONS**  
 COMM. ORD. 0-95-17 DATE 11-17-93

**RESIDENTIAL ZONES**

- R-1 Residential One, Single Family
- R-2 Residential Two, Single and Two Family
- R-3 Residential Three, Single and Two Family
- R-4 Residential Four, Two, Three and Multi-Family
- R-5 Residential Five, Multi-Family

**COMMERCIAL ZONES**

- CBD Central Business District
- NC Neighborhood Commercial
- SC Shopping Center
- PO Professional Office
- RFD Riverfront District
- CBDF Central Business District Fringe

**INDUSTRIAL ZONES**

- I-1 Industrial One, Manufacturing and Wholesale
- I-2 Industrial Two, Heavy Industry

**OTHER ZONES**

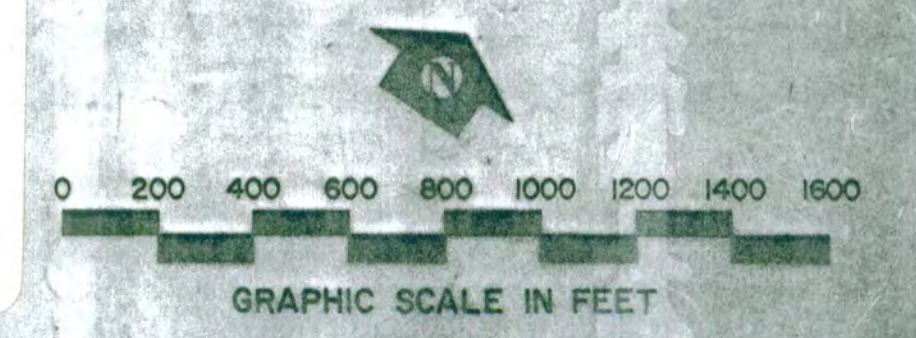
- CO Conservation Zone

**FLOOD DATA\***

- Floodway
- █ Floodplain
- A— Cross Section Station

*York Street Historic District*  
 Campbell Co., Ky  
 Map 22 Photo Key  
 photo numbers in circles

**CITY OF NEWPORT  
 CAMPBELL COUNTY, KENTUCKY**



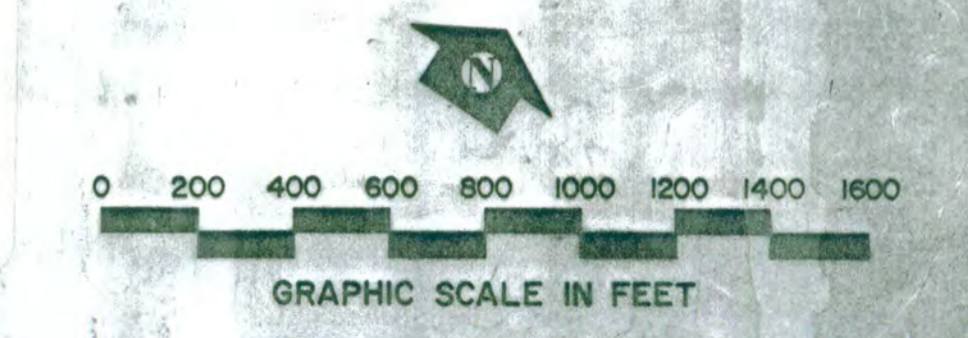
\* SEE SECTION 9.21 - FLOOD PROTECTION DEVELOPMENT CONTROLS



**OFFICIAL ZONING MAP OF THE CITY OF NEWPORT, KENTUCKY**

DATE OF ADOPTION: \_\_\_\_\_  
 ORDINANCE NO. \_\_\_\_\_  
**REVISIONS**  
 COMM. ORD. 0-25-17 DATE 11-17-93  
 \_\_\_\_\_  
 \_\_\_\_\_  
 \_\_\_\_\_

**CITY OF NEWPORT  
 CAMPBELL COUNTY, KENTUCKY**



**RESIDENTIAL ZONES**

- R-1 Residential One, Single Family
- R-2 Residential Two, Single and Two Family
- R-3 Residential Three, Single and Two Family
- R-4 Residential Four, Two, Three and Multi-Family
- R-5 Residential Five, Multi-Family

**COMMERCIAL ZONES**

- CBD Central Business District
- NC Neighborhood Commercial
- SC Shopping Center
- PO Professional Office
- RFD Riverfront District
- CBDF Central Business District Fringe

**INDUSTRIAL ZONES**

- I-1 Industrial One, Manufacturing and Wholesale
- I-2 Industrial Two, Heavy Industry

**OTHER ZONES**

- CO Conservation Zone

**FLOOD DATA\***

- Floodway
- ▬ Floodplain
- A — Cross Section Station

YORK STREET HISTORIC DISTRICT  
 Campbell Co., KY  
 Map 1: Inventory Map  
 noncontributing buildings indicated by cross-hatching

York Street Historic District  
 Campbell Co. 1941  
 Map 1: Building Inventory  
 noncontributing buildings indicated by cross-hatching

\* SEE SECTION 9.21 - FLOOD PROTECTION DEVELOPMENT CONTROLS



Education, Arts and Humanities Cabinet

**KENTUCKY HERITAGE COUNCIL**

The State Historic Preservation Office

**Brereton C. Jones**  
Governor  
**Sherry K. Jelsma**  
Cabinet Secretary

**David L. Morgan**  
Executive Director  
and SHPO

March 29, 1995

Ms. Carol Shull, Keeper  
National Register of Historic Places  
National Park Service, U. S. Department of Interior  
1100 L Street, N. W.  
Washington, D. C. 20204

Dear Ms. Shull:

The following Kentucky properties were approved at the January 26, 1995 State Historic Preservation Review Board meeting. I request that they be listed in the National Register of Historic Places:

✓ York Street Historic District, Campbell County, KY

Powell, William S., House, Caldwell County, KY

Thank you for considering these two properties for listing.

Sincerely,

A handwritten signature in cursive script, appearing to read "David L. Morgan".

David L. Morgan  
State Historic Preservation Officer





Education, Arts and Humanities Cabinet

**KENTUCKY HERITAGE COUNCIL**

The State Historic Preservation Office

**Brereton C. Jones**  
Governor  
**Sherry K. Jelsma**  
Cabinet Secretary

**David L. Morgan**  
Executive Director  
and SHPO

September 20, 1995

Ms. Carol Shull, Keeper  
National Register of Historic Places  
National Park Service, U. S. Department of Interior  
1100 L Street, N. W.  
Washington, D. C. 20204



Dear Ms. Shull:

The Kentucky property, York Street Historic District, was listed in the National Register of Historic Places on May 26, 1995. Subsequently, the nomination preparer sent us two pieces of information which we request be added to the property's file, reference # 95000640.

- 1) revised continuation sheet 7-10. Please replace the original page 7-10 with this revised page;
- 2) please add this new district sketch map to the file. Please discard that original district sketch map.

Thank you for adding this information to the listed property's file.

Sincerely,

David L. Morgan  
State Historic Preservation Officer

