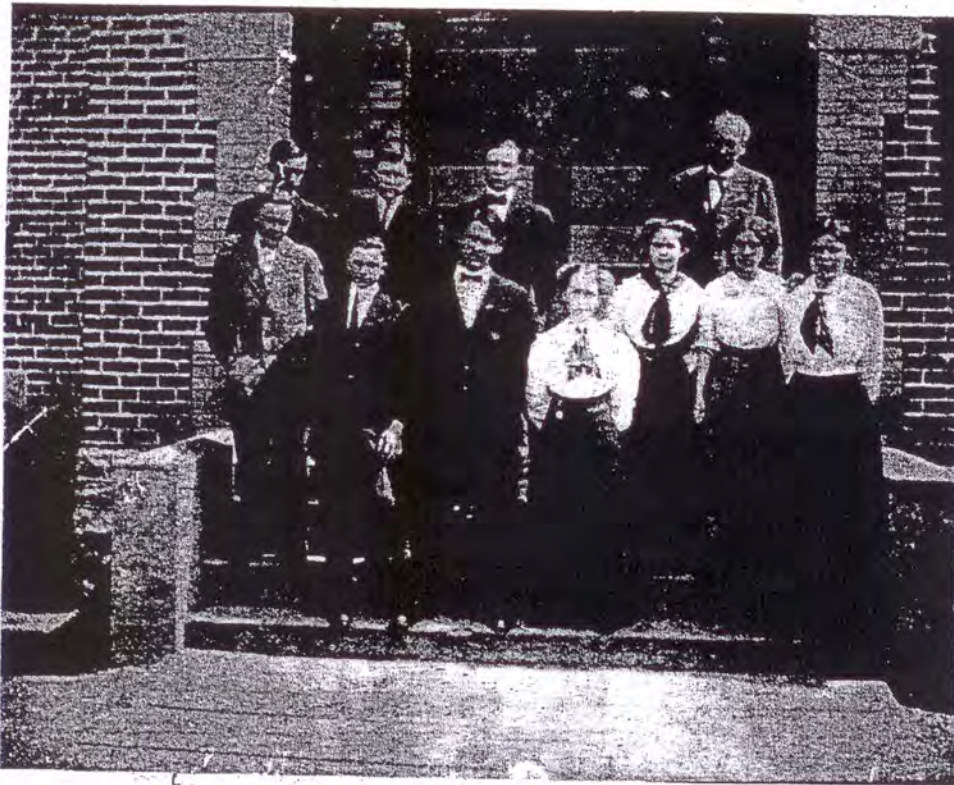


ERLANGER HISTORY



The public school's activities and growth were routine until the middle 1920's, when a large building with more departments was needed. At this time consolidation of the Elsmere District and the Erlanger district were being given thought. Merger of the two districts became the Erlanger-Elsmere Board of Education in 1928. That same year, Lloyd High School was under construction at the corner of Cowie and Bartlett Avenues. (This building has recently been renamed to Tichenor Middle School).

In 1955, the present Lloyd High School, located at the northwest end of Bartlett Avenue, was ready for classes and has had one large addition added to it in the last few years.

The first four years of high school were organized in the Erlanger system during the transfer to the Locust Street School in 1909. Superintendents, starting with the first graduating class in 1912, were Prof. James McGinniss, Prof. Preston L. Hamlett, Prof. Ellison, Mr. Foema Rudd, Mr. Edgar Arnett, Mr. James I. Tichenor, (who will be retiring June 30, 1971), and Mr. John Miles, who is to be the superintendent, beginning July 1, 1971. Mr. David Whaley is the assistant superintendent, Miss Charity Cowan is Supervisor. There are four principals, one truant officer and 130 teachers in the Erlanger-Elsmere District.

Before Elsmere and Erlanger School District merged, it is my understanding that the Negro School operated independently of the Elsmere District, but became a part of the district when the merger of the two districts took place. As an independent school, the Negro school, which was known as the "Dunbar School", held its classes in the Negro Baptist Church, located on Spring Street.

Several years before the black and white schools were integrated, the merged districts purchased several acres on Capitol Avenue in Elsmere and built a four-room building for a Negro school. Name of the school is Wilkins School. (The Wilkins family were owners of acreage purchased by the Board of Education.)

Two new school buildings are under construction at this time. One, the W.J. Lindemann School, located on Erlanger Road in the 500 block which has an outlet on Riggs Avenue is an elementary school. Another building is on four plus acres on Sunset Avenue with an entrance off Rosebud Avenue. This school has not yet been named.

Activities, other than the regular curriculum are football, baseball, basketball, cheerleaders, the band, track, golf, tennis, swimming (boys and girls), Speech Club, Art Club, Future Teachers, "L" Lettermens Club, National Honor Society, Pep Club, Red Cross Club, Spanish Club, Student Council, Tri-Hi-Y. Outside groups include Parents and Teacher groups, Athletic Boosters, Band Boosters, and Parent Teacher Student Association.

The schools' State rating is "Comprehensive".

First graduating class, Erlanger High School 1912.

Front row: Floyd Ryle, Harry Tees, Russell Victor, teacher Tula Chambers, Virginia Yeager, Sadie Riggs, Elizabeth Victor

Back Row: Julius Carter, Charles Nease, Harry Slater, Prof. James McGinniss.