

MAYSVILLE

Mason County



The Gateway
To The Bluegrass Region
of Kentucky



For Detailed Information

Address

THE CHAMBER OF COMMERCE

INCORPORATED

MAYSVILLE, KENTUCKY

CARL DODDS, Secretary-Manager

LOCATION

In the Heart of the Burley Tobacco District
County Seat of Mason County, the best Agricultural and Tobacco County
in the U. S. A.

63 miles up the Ohio River from Cincinnati.

Transportation Facilities; Chesapeake & Ohio, R. R., Louisville & Nashville
R. R. and the Ohio River.

In midst of Beautiful Scenery and Historical Country.

\$4,000,000 worth of Tobacco handled through Warehouses in 1916.

Second largest Tobacco Market in the State. Largest Loose Leaf Ware-
house in the World.

CITY SURVEY

Population 8786.
Nine Miles Asphalt and Brick
streets.
New Federal Building.
New \$75,000 C. & O. Depot.
Fine L. & N. Depot.
Two Motion Picture Shows and
Opera House.
Total Tax Rate \$2.49.
City Hospital Red Cross Organiza-
tion.
All Fraternal Organizations.
Princess Skating Rink.
Annual Average Temperature 55.5.
Annual Precipitation 40.54.
1082 Telephones in Use.
Beechwood and Base Ball Parks.
Second Strongest Water Pressure
for Fire Protection in U. S.
Ferry Boat to Aberdeen, Ohio.

Four Banks—Deposits \$4,000,000,
Capital and Surplus \$547,000.
Sixteen Motor Buses, Carrying Pas-
sengers and Freight in County.
Fine Hotels and Restaurants.
Natural Gas Rate .30 Per M.
Electric Rate .10 to .02½.
Sixteen Churches, all Denominations
Fine Public Library.
Three Daily Papers.
Street Railway System.
Two Modern Motor Fire Trucks.
Three Building and Loan Associa-
tions.
Two Trust Companies.
Two Large Wholesale Groceries.
Modern Power Plant meeting all
public service requirements.
Large Egg and Poultry Market.
Wholesale Dry Goods Stores.

COUNTY SURVEY

Area 227 Square Miles.
124280 Acres.
Population 20,000.
Property Valuation \$11,000,000,
Franchise Assessment \$2,799,-
835, Total \$13,799,835.
Historical Court House.
Active Woman's Club.
County Demonstrator.
Commission Form Government.
Highest Per Cent. Macadam Roads
in the State.

Big Cattle and Hog Market, Also
Horses, Sheep and Mules.
County Milk Dealers Association.
6 Miles of Model Roads, 85 Miles
Dirt Roads, 320 Miles Turn-
pike Roads.
Crop Valuation in 1910 \$4,040,580.
Producing Cereals, Grain, Hay, For-
age, Vegetables, Fruits, Nuts,
Corn, Tobacco, Buckwheat and
Potatoes.

HEALTH AND SANITATION

Death Rate; 14.05 per 1000.

First County in Kentucky, to receive Sanitary Survey by the U. S. Public
Health Service.

19th County in the U. S. receiving Health and Sanitation Survey.

Only County in the U. S. to contribute funds through popular subscription for
the Survey.

Effort being made to give us a purer water supply, also a much improved
sewerage disposal.

Through their efforts, we are enjoying the highest grade of milk and milk
products.

County maintains Health and Welfare League with City and County Visiting
Nurses.

EDUCATIONAL FACTS

CITY

Six Public Schools.
 Property Valuation \$160,000.
 Teachers Employed 32.
 Enrollment 1093.
 Class A High School.
 Largest Per Cent. of Graduates in State, 46 in 1917 Class.
 Languages: English, Latin, Spanish, German.
 Courses: Classical, Commercial, Scientific, Domestic Science.

COUNTY

Six Consolidated Schools.
 Property Valuation \$80,000.
 Teachers 66, Enrollment 3514.
 The Consolidated Schools, Linked with the American Red Cross, County Nursing Service, represents the Ideal Institution. Pioneer County in Consolidation of Public Schools, Pupil Transportation at County Expense and Teacherage.

Parochial School—4 teachers, 145 pupils.

OUR INDUSTRIES

Thompson & McAtee, Buggies.
 Maysville Cotton Mills.
 Limestone Lumber Co., Saw Mill.
 L. M. Mills, Planing Mill.
 Jas. H. Hall Plow Company.
 Ohio Valley Pulley Works.
 Hirschfeld Shoe Company.
 Hirschfeld Glove Company.
 Twine and Fly Net Factory.
 Mini Cola Plant.
 Elite Confectionery, Candy Makers.
 Kentucky Bottling Company.
 Maysville Ice & Cold Storage Co.
 Murray & Thomas Monument Co.
 H. E. Pogue Distillery.
 Maysville Syrup Company.
 John Kain, Blacksmith and Wagon Maker.

Traxel Cream, Baker and Candy Factory.
 Maysville Brick Company.
 Sphar Brick Company.
 Maysville Machine & Iron Works.
 R. & W. Rasp, Sheet Metal Works.
 J. H. Rogers & Co., Distillery.
 Gallenstein & Galienstein, Blacksmiths and Wagon Makers.
 Bauer & Klipp, Harnessmakers.
 Mike Brown, Harnessmaker.
 Steam Laundry.
 Magnolia Flour Mills.
 J. C. Everett Wheat and Grain Elevator.
 Leonard & Lally, Tinnors and Roofers.

TOBACCO INDUSTRY



LOOSE LEAF HOUSES

Home	Liberty
Independent	Central
Planters	Farmers
Growers	Peoples
Amazon	

CIGAR FACTORIES

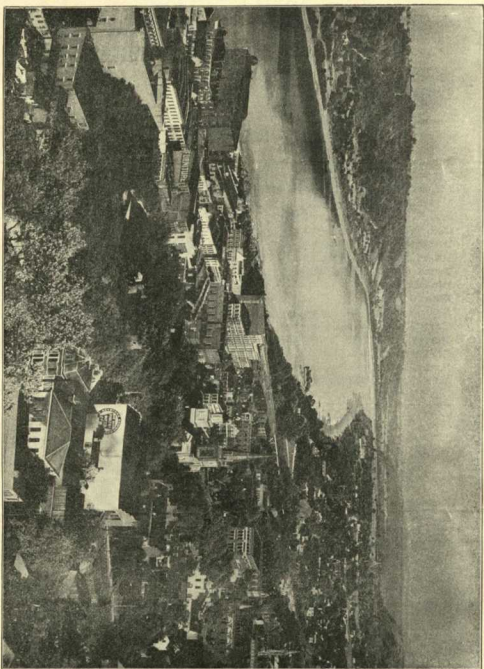
E. A. Robinson & Co.
 Geo. W. Childs Cigar Co.
 Kirwin & Co.
 Peebles Cigar Co.
 J. A. Walker Cigar & Tobacco Co.

RE-DRIERS and STORAGE

Liggett & Meyers Tobacco Co.
 J. P. Taylor Tobacco Co
 Hizer-Tuck Co.
 American Tobacco Company.
 R. J. Reynolds Tobacco Company.
 T. H. Gray.
 Kirk & Key.

STEMMERY

American Tobacco Co.



VIEW OF MAYSVILLE FROM BUFFALO TRACE