

Ref^d to M^r Borden
Oct 15. 88.
D. Enwright
Sgp.

(101.)

Post Office Department,
TOPOGRAPHER'S OFFICE,

Washington, *Oct 4*, 1888.

Sir:

To enable the Topographer of this Department to determine, with as much accuracy as possible, the relative positions of Post Offices, so that they may be correctly delineated on its maps, the Postmaster General requests you to fill up the spaces below, and the diagram on fourth page, returning the same, verified by your signature and dated, under cover to this Office.

Respectfully, &c.,

D. Enwright
Topographer P. O. Dept.

TO POSTMASTER AT

Augusta,
Bracken Co.,
Ky.

The (P. O. Dept.) name of my Office is

Augusta

* Its local name is

Augusta

It is situated in the

quarter of Section No. _____, in Township

(north or south), Range

(east or west), County

of *Bracken*

State of *Kentucky*

The name of the most prominent river near it is *Ohio*

The name of the nearest creek is *Bracken*

This Office is *on* miles from said river, on the *South* side of it, and is *above* miles from said nearest creek, on the *West* side of it.

The name of the nearest Office on route No. _____ is *Higginsport, Ohio*, and its distance is *3* miles, by the traveled road, in a *East* direction from this my Office.

The name of the nearest Office, on the same route, on the other side, is *Buckley, Ky* and its distance is *4* miles in a *West* direction from this my Office.

The name of the nearest Office off the route is *Bellevue, Ky*, and its distance by the most direct road is *5* miles in a *South* direction from this my Office.

This office is at a distance of *900 ft.* from the *track* station of the *Wayssville & Big Sandy* Railroad, on the *North* side of the railroad.

State, under this, the names of other Offices near your Office, in different directions from it, and their distances from it by the most direct roads.

* If the town, village, or site of the Post Office be known by another name than that of the Post Office, state that other name here, that it may be identified on the map of the State (or Territory).

EP A diagram of the township and sections (or, where the land is not so divided, a sketch map), showing the precise location of your Office, together with the adjoining Post Offices, towns, or villages, the roads, railroads, and larger streams or creeks, in addition to the above, will be useful, and is desired.—(See diagram blank accompanying this, to be filled up.)

(Signature of Postmaster.)

J. M. Borden

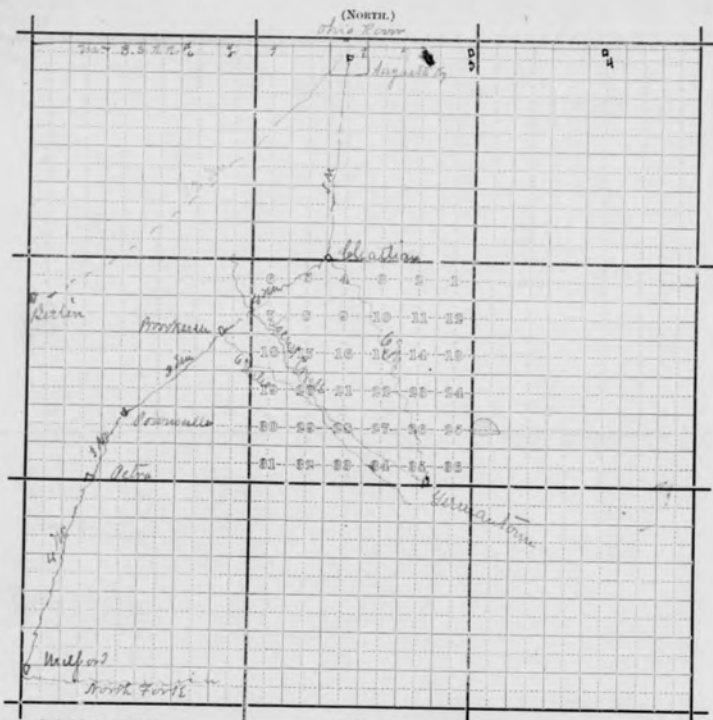
(Date.)

Oct 12 1888.

ELECTRO'S.

Diagram showing the site of the Argyle Post Office
in Township _____ Range _____ of _____ Principal
Meridian, County of Bradley, State
of Kentucky, with the adjacent Townships and Post
Offices.

It is requested that the exact site of the proposed, or existing Post Office, as also the roads to the adjoining Offices, and the larger streams or rivers, be marked on this diagram, to be returned as soon as possible to the Post Office Department. If on, or near a railroad, mark the railroad and adjacent Station accurately.



Scale 1/2 inch to the mile.

- 0 station
- 1 willoughby
- 2 Argyle
- 3 Higgins Fork
- 4 Benton
- 5 Crabtree
- 6 Post Office



Post Office Department,
TOPOGRAPHER'S OFFICE.

Please answer at once Washington, D. C., July 27, 1897

Sir:

To enable the Topographer of this Department to determine, with as much accuracy as possible, the relative positions of Post Offices, so that they may be correctly delineated on its maps, the Postmaster General requests you carefully to answer the questions below, and furnish the diagram on the other side, returning the same as soon as possible, verified by your signature and dated, under cover to the Topographer's Office, Post Office Department.

Respectfully, etc.,

Topographer P. O. Dept.

TO POSTMASTER AT Augusta
Bracken Co.
Ky.

The (P. O. Dept.) name of my Office is Augusta Ky

If the town, village, or site of the Post Office be known by another name than that of the Post Office, state that other name here: Augusta Ky

My Office is situated in N part of No 2 Township, or in _____ quarter of Tract No. Augusta

Township, County of Bracken

State of Kentucky

The name of the most prominent river near it is Ohio

The name of the nearest creek is Bracken & South W

My Office is 1/2 miles from said river, on the South side of it, and is 1 miles from said nearest creek, on the West side of it.

My Office is on Mail Route No. _____

My Office is a Special Office supplied from _____ miles distant.

The name of the nearest Office on my route is Rockspring, and its distance is 3 miles, by the Rail road, in a N direction from this, my Office.

The name of the nearest Office, on the same route, on the other side, is Dorer and its distance is 6 miles in a E direction from this, my Office.

The name of the nearest Office off the route is Guttrick, and its distance by the most direct road is 3 1/2 miles in a S-W direction from this, my Office.

My Office is at a distance of 2660 ft from the track of the C & O Railroad, on the N side of the railroad.

My Office is _____ miles, air line distance, from nearest point of my County boundary.

Please give the exact location of the P.O. Building by streets Upper street west side
Wilson front & Sec. (Signature of Postmaster) J. H. Armstrong & Co

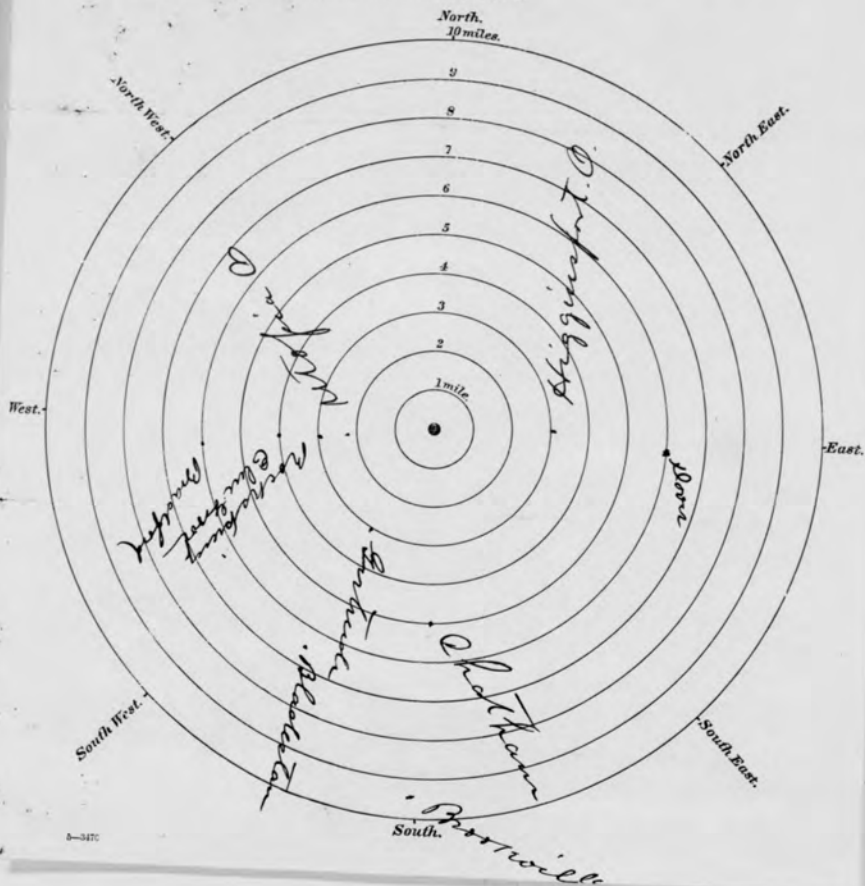
(Date) July 28 1897

DIAGRAM, EXPLANATION, AND INSTRUCTIONS.

The dot in the center of the 1-mile circle represents the site of your office.
 The surrounding offices should be carefully located by placing dots on or between the mile circles at the exact distance, and in the right direction from the proposed one, and their names plainly written.

If it should be necessary to designate an office which is over 10 miles from the proposed one, place the dot outside of the 10-mile circle, write the name of such office, and state its distance from the proposed one.

Draw distinctly the railways, roads, rivers, and creeks.



A.

Post Office Department
FOURTH ASSISTANT POSTMASTER GENERAL
Washington

RETURN TO
 DIVISION OF TOPOGRAPHY

Postmaster, —

JUL 20 1939

AUGUSTA,

KY.

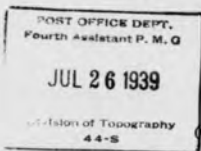
The following information is required in order that your post office may be shown in its proper location on postal maps. Please complete this form immediately and return it without delay with the map or sketch described on the reverse side. A letter of reply is not necessary.

J. W. Mardum
 FOURTH ASSISTANT POSTMASTER GENERAL

1. Street address of post office 132 Main Street County Bracken
2. Township _____ (If location is described by section, township, and range, fill in line 3.)
3. _____ quarter of section _____ Township _____ N. or S. _____ Range _____ E. or W. _____
4. Nearest adjoining county Brown How far: Shortest air distance? .6 mi. By road? .75
5. Nearest U. S. or State highway State #19 Direction from P. O. East Distance 10 ft.
6. Name of nearest railroad station Augusta, Ky Name of railroad Chesapeake & Ohio
7. Distance by road to railroad station .5 mi. Direction from post office Southeast
8. Shortest air distance to nearest tracks 525 ft. Direction from post office South
9. Nearest streams or bodies of water (state whether river, creek, branch, lake, ocean, etc.):

Name	Direction from post office	Distance
<u>Ohio River</u> River	<u>North</u>	<u>530 ft.</u>
<u>Big Bracken</u> Creek	<u>East</u>	<u>.6 mi.</u>
10. Post offices nearest to your office (one in each general direction):

Name	County	Direction from your office	Distance by road
<u>Dover, Ky</u>	<u>Mason</u>	<u>East</u>	<u>9.75</u>
<u>Brooksville, Ky</u>	<u>Bracken</u>	<u>South</u>	<u>9.90</u>
<u>Elm Grove, Ky</u>	<u>Bracken</u>	<u>West</u>	<u>6.85</u>
<u>Georgetown, Ohio</u>	<u>Brown</u>	<u>North</u>	<u>10.20</u>
11. How is mail supplied to your office? C. & O. Railroad From where? Cincinnati & points east of Augusta, Ky on main line of C. & O. Railway.



(Date) July 24, 1939

(Signed) W. M. Call Richey Postmaster.

Post office Augusta, Kentucky 66511

4901-9-R1 (Location Paper)

(OVER)

5-11874

IMPORTANT.—A map or sketch showing the location of your post office must be submitted with the return of this paper. A printed map, such as prepared by the county or city engineer, is preferred, if it can be furnished without expense to the Department. Be sure, however, to mark on it the exact site of the post office, placing a small dot in the proper square or block and on the proper side of the street.

If a separate map cannot be furnished it is necessary to submit a sketch as described below.

These diagrams are furnished simply to make it easier to draw a sketch that will show correct distances from your post office.

SQUARE DIAGRAM

Use this diagram if your post office is located in an area described by section, township, and range, and you have filled in line 3 on the other side. Otherwise use the circular diagram.

Place a small dot representing your post office in the proper quarter-section and fill in the blanks for township and range numbers.

Then draw the following features: (Note that one-half inch on the paper equals 1 mile on the ground.)

- Adjacent post offices (show with small dots and name).
- Railroads (show by single line with cross marks; name).
- Highways (show by double lines close together and mark U. S. and State numbers; name in margin the post office to which each road leads).
- Rivers, creeks, lakes, etc. (show by wavy lines and name).
- County line (show by dashes).

CIRCULAR DIAGRAM

Use this diagram if your post office is NOT located in an area described by section, township, and range.

Let the dot in the center of the circle represent your post office.

Then draw the features a, b, c, and e, as described above. (Note the scale of this diagram: One-quarter inch equals 1 mile.)

