

B

(101.)

F.S.

Post Office Department,  
TOPOGRAPHER'S OFFICE,

Washington, Jan 3, 1890.



Sir:

To enable the Topographer of this Department to determine, with as much accuracy as possible, the relative positions of Post Offices, so that they may be correctly delineated on its maps, the Postmaster General requests you to fill up the spaces below, and the diagram on fourth page, returning the same, verified by your signature and dated, under cover to this Office.

Respectfully, &c.,

C. Rosser J  
Topographer P. O. Dept.

To POSTMASTER AT

Flagg Spring, Campbell Co., Ky.  
*(See site wanted as changed Dec 26-97 1/2 mile East on R.R.)*

The (P. O. Dept.) name of my Office is Flagg Spring Ky

\* Its local name is Flagg Spring Ky

It is situated in the South East quarter of Section No.     , in Township      (north or south), Range      (east or west), County of Campbell, State of Ky.

(The name of the most prominent river near it is Ohio River)

The name of the nearest creek is Bells Creek

This Office is 1 1/2 miles from said river, on the South West side of it, and is 1/4 miles from said nearest creek, on the North side of it.

The name of the nearest Office on route No. 2005 is Mentor Ky., and its distance is 1 1/2 miles, by the traveled road, in a East direction from this my Office.

The name of the nearest Office, on the same route, on the other side, is California Ky and its distance is 3 miles in a South East direction from this my Office.

The name of the nearest Office off the route is Cook Grove Ky, and its distance by the most direct road is 4 1/2 miles in a South East direction from this my Office.

This office is at a distance of 1 1/2 miles from the track Station of the Maple v. Big Sandy Railroad, on the East side of the railroad.

State, under this, the names of other Offices near your Office, in different directions from it, and their distances from it by the most direct roads. Gulser P.O. 3 mi West-Cartridge 3 mi north

\* If the town, village, or site of the Post Office be known by another name than that of the Post Office, state that other name here, that it may be identified on the map of the State (or Territory).

† A diagram of the township and sections (or, where the land is not so divided, a sketch map), showing the precise location of your Office, together with the adjoining Post Offices, towns, or villages, the roads, railroads, and larger streams or creeks, in addition to the above, will be useful, and is desired.—(See diagram blank accompanying this, to be filled up.)

(Signature of Postmaster.) James L. Rice.

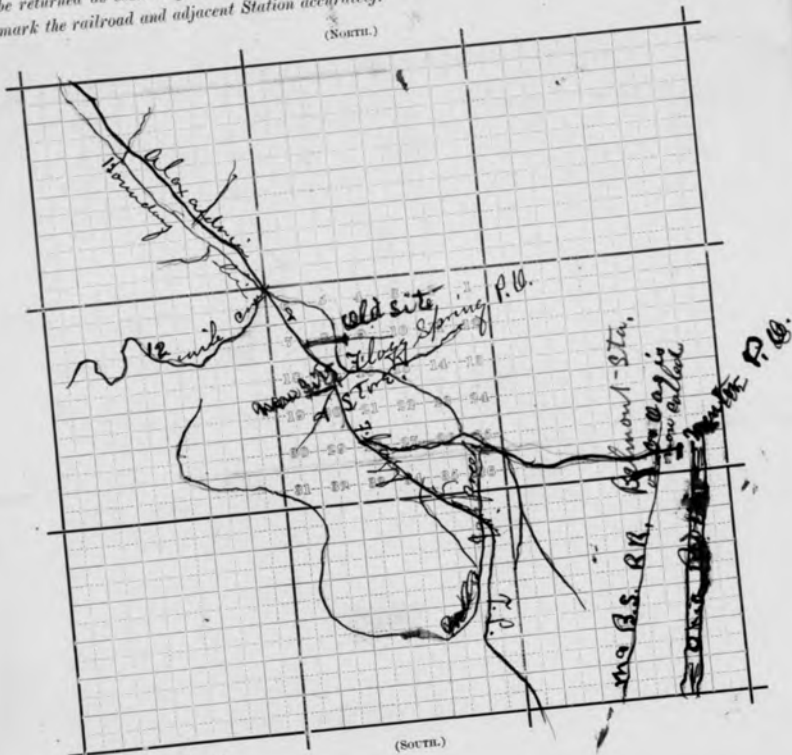
(Date.) Jan 9 - 1890.

ELECTROTYPE

Diagram showing the site of the Flag Spring Post Office  
 in Township Amber Mill Range of Principal  
Meridian, County of Campbell, State  
 of Ky., with the adjacent Townships and Post  
 Offices.

It is requested that the exact site of the proposed, or existing Post Office, as also the roads to the adjoining Offices, and the larger streams or rivers, be marked on this diagram, to be returned as soon as possible to the Post Office Department. If on, or near a railroad, mark the railroad and adjacent Station accurately.

(North.)



Scale 1/4 inch to the mile.

(South.)



Post Office Department,

TOPOGRAPHER'S OFFICE,

Washington, D. C., Jan 21, 1896

The Topographer of this Department to determine, with as much accuracy as possible, the relative positions of Post Offices, so that they may be correctly delineated on its maps, the Postmaster General requests you carefully to answer the questions below, and furnish, on the other side, a diagram of your Township, returning the same as soon as possible, verified by your signature and dated, under cover, to the Topographer's Office, Post Office Department.

Respectfully, etc.,

*L. C. C.*  
*(Flag Spring)*

*Rowland A. A. A.*  
Topographer P. O. Department.

To POSTMASTER AT

*Flag Spring,*  
*Campbell Co.,*  
*Ky.*

The (P. O. Dept.) name of my Office is *Flag Spring.*

\* Its local name is \_\_\_\_\_

It is situated in \_\_\_\_\_ part of \_\_\_\_\_ Township, or in \_\_\_\_\_ quarter of Tract No. \_\_\_\_\_

\_\_\_\_\_ Township, County of *Campbell*, State of *Kentucky.*

The name of the most prominent river near it is *the Ohio.*

The name of the nearest creek is *Six miles.*

This Office is *2 1/2* miles from said river, on the *south* side of it, and is

*1/4* miles from said nearest creek, on the *south* side of it.

The name of the nearest Office on Route No. \_\_\_\_\_ is *Montee*, and its distance is *3 1/4* miles, by the traveled road, in a *east* direction from this, my Office.

The name of the nearest Office, on the same route, on the other side, is \_\_\_\_\_ and its distance is \_\_\_\_\_ miles in a \_\_\_\_\_ direction from this, my Office.

The name of the nearest Office off the route is *Guthrie Hill*, and its distance by the most direct road is *3* miles in a *west* direction from this, my Office.

This Office is at a distance of *4 miles* from the track of the *C. & O. R. R.* Railroad, on the \_\_\_\_\_ side of the railroad.

State, under this, the names of all other Offices near your Office, in different directions from it, and their distances from it by the most direct roads.

*Beaver Springs is the Co. Surveyor at Alexandria Ky.*

\* If the town, village, or site of the Post Office be known locally by another name than that of the Post Office, state that other name here, that it may be identified on any published map of the State (or Territory), if appearing thereon. If a diagram of the township (or, where the land is not so divided, a sketch map), showing the precise location of your Office, together with the adjoining Post Offices, towns, or villages, the roads, railroads, and larger streams or creeks, in addition to the above verbal description, will be useful, and is desired.

A correct map of the locality and adjacent country might be furnished by your County Surveyor, but this must be without expense to the Post Office Department; it being, however, for the general interest and advantage of the community to have the Post Offices correctly located on the maps, it may be expected that this will be cheerfully furnished on proper application.

State whether there is on file at your county seat (court-house), or in the hands of your County Surveyor, a Map of the county.

State also the present Surveyor's name and Post-office address.

(Signature of Postmaster,)

(Date,)

*J. P. Nelson*  
*Feb. 15, 1896.*

